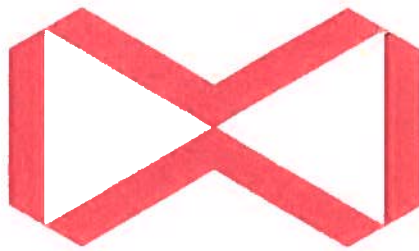


# **SITE SAFETY AND EMERGENCY ACTION PLAN**



# **McWHINNEY**

**MRG, LP**

**2725 Rocky Mountain Ave, Suite 200, Loveland, CO 80538**

**Facility Name:**

**CE Pad**

**Facility Street Address: TBD**

**LOVELAND, COLORADO**

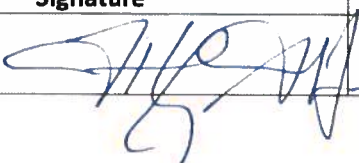
**Prepared on: April 12, 2023**

## Table of Contents

SECTION 1 – APPROVAL SIGNATURES .....	3
SECTION 2 – SITE ADDRESS AND DIRECTIONS .....	4
a) Directions:.....	4
b) Ingress and egress information: .....	4
c) Physical Address and GPS coordinates .....	4
d) Emergency Evacuation/Muster Assembly point(s) .....	4
SECTION 3 – LIST OF EMERGENCY CONTACTS.....	5
a) MRG Personnel .....	5
b) MRG Community/Media Relations.....	5
c) First Responders (Fire, EMS, HazMat) .....	5
d) Local, State, and Federal Contacts.....	5
e) Medical Facilities ( <i>Nearest locations to site</i> ) .....	5
f) Spill Response Organization ( <i>Contracted</i> ) .....	6
g) Other .....	3
SECTION – 4 SITE SPECIFIC INFORMATION .....	6
a) Site Description.....	6
b) Nearby Schools, High Occupancy Buildings, Waterways.....	6
c) Site Safety Requirements and General Safety Information.....	6
d) SDS. ....	6
e) Fire Suppression Water Supply.....	6
f) Heavy Equipment List .....	7
g) Chemicals stored on-site Gallons .....	7
SECTION 5 – MAPS AND DRAWINGS .....	9
Facility drawing.....	10
Project Location Access Map and Muster Point.....	11
Haul Route /HazMat deliver Map.....	12
2500' Offsetting Parcel Map .....	13
Cultural Features .....	14
SECTION 6 – SPILL RESPONSE AND CLEAN-UP.....	15
a) Spill Response .....	15
b) Spill Reporting.....	15
SECTION 7 – REPORTABLE QUANTITIES.....	16
a) Reportable Quantities .....	16
b. Reporting Requirements.....	16
SECTION 8 – EVACUATION INFORMATION .....	16
a. Evacuation Plan Procedures (public) .....	16
b. Nearby Residences.....	17
SECTION – 9 TRAINING AND EXERCISES .....	18
SECTION – 10 COORDINATION WITH FIRST RESPONDERS .....	18
SECTION – 11 PLAN REVIEW AND UPDATE PROCEDURES.....	18

## SECTION 1 – APPROVAL SIGNATURES

**Instructions:** Company Representative to sign with concurrence review by local Fire Department/Districts

MRG, LP			
Name	Signature	Title	Date
Troy McWhinney		Manager	4.20.23
LFRA			
Name	Signature	Title	Date
TIMOTHY E. SENGUBAULT		FIRE CHIEF	4-19-23

## **SECTION 2 – SITE ADDRESS AND DIRECTIONS**

### **a) Directions:**

From the intersection of U.S. Highway 34 and Larimer County Road 3, go north on CR 3 for 1/2 mile. Turn left, go 1/10 mile west into facility.

From the intersection of Crossroads Boulevard and Larimer County Road 3, go south on CR 3 for 1/2 mile, turn right, go 1/10 mile west into facility.

### **b) Ingress and egress information:**

During the drilling and completion phases, all traffic into and out of the facility will check-in and check-out with security, who will be located in a trailer at the northern access to the site. All ingress and egress routes will be clearly identified and kept clear from parked/staged vehicles at all times.

During the production phase, the facility will be chain-link fenced and access will be via a locked security gate with Knox Box access.

### **c) Physical Address and GPS coordinates**

- **Legal Description** – SENE Section 11, T5N, R68W
- **Street Address** - tbd
- **Town, Zip** – Loveland, CO 80538
- **Lat/Long:** 40.41555°N      Long: -104.96605°W

### **d) Emergency Evacuation/Muster Assembly point**

Incidents at the facility could pose a hazard to personnel onsite, such as a fire or hazardous material release, and evacuation may be required to ensure the safety of onsite personnel. In the event of an emergency, site personnel will initially be evacuated to a pre-designated muster assembly point.

- The Muster Assembly point is identified on the figures in Section 5 of this plan.
- The Muster Assembly point will be identified during all site safety briefings for visitors, employees, and contract personnel.
- During the drilling and completion phases, all personnel and approved visitors to the facility will be required to enter through a manned security checkpoint. Upon checking in, employees and visitors will be provided a detailed safety briefing of current operations, all safety precautions that must be adhered to, and the location of the muster point. In addition, all personnel who enter the location must sign-out at the manned security checkpoint upon their departure. Gate watch personnel will maintain a current count of total personnel at the facility at any given time. In addition, the lead supervisor of each subcontractor company working at the facility is required to keep a personnel log and current count of their individual company's personnel on location.
- During the production phase, there will be no manned security checkpoint. The facility will initially be manned 24/7, transitioning to personnel onsite during daylight-hours only, then transitioning to daily visitations with no continuous personnel on-site. At all times, MRG's company representative and the lead supervisor of each subcontractor company working at the facility will be required to keep a personnel log and current count of their individual company's personnel on location.

### **SECTION 3 – LIST OF EMERGENCY CONTACTS**

**a) MRG, LP 2725 Rocky Mountain Avenue, Suite 200, Loveland, CO 80538**

<b>Name</b>	<b>Office Phone</b>	<b>Emergency/Cell</b>
Corporate Office	970-962-9990	970-669-7411
MRG EHS on-call Emergency Manager - Bill Irwin	970-669-7411	303-356-6052
EHS POC - Andy Peterson	970-669-7411	970-203-4263
EHS Environmental - Trisha Fanning	303-503-7539	303-503-7539

**b) MRG Community/Media Relations**

<b>Name</b>	<b>Office Phone</b>	<b>Cell Phone</b>
Celeste Smith	970-962-9990	970-776-4036
Trisha Fanning	303-503-7539	303-503-7539

**c) First Responders (Fire, EMS, HazMat)**

<b>Name</b>	<b>Emergency Number</b>	<b>Non-Emergency Number</b>
<b>*All emergency notifications require notification to 911 first</b>		
LFRA Station #10	911	970-962-2471
LFRA Station #6	911	970-962-2471
Thompson Valley EMS	911	970-663-6025
Loveland Police Department	911	970-667-2151
Colorado State Highway Patrol	911	970-224-3027
Larimer County Sheriff	911	970-498-5100

**d) Local, State, and Federal Contacts**

<b>Name</b>	<b>Emergency Number</b>	<b>Non-Emergency Number</b>
Colorado Oil and Gas Conservation Commission	303-894-2100	303-894-2100
CDPHE	none	877-518-5608
Colorado Parks & Wildlife	none	303-291-7227
National Response Center	800-424-8802	none

**e) Medical Facilities**

<b>Name</b>	<b>Office Phone</b>
Medical Center of the Rockies, 2500 Rocky Mountain Ave, Loveland	970-624-2500
Banner North Colorado Medical Center, 1801 16 <sup>th</sup> St., Greeley	970-810-4121
Banner North Colorado Medical Center (Wound Care & Burn Unit)	970-810-6075

--	--

**f) Spill Response Organization (Contracted)**

Name	24/7 Emergency Number	Non-Emergency Number
Custom Environmental Services, Inc.	800-310-7445	303-423-9949

**g) Other**

Name	24/7 Emergency Number	Non-Emergency Number
Greeley Loveland Irrigation Company	970-590-0299	970-352-0495

### **SECTION – 4 SITE SPECIFIC INFORMATION**

**a) Site Description**

The CE Pad will have fifteen (15) oil and gas wells drilled and producing at the facility. The drilling rig will be onsite and working 24/7 for approximately ninety (90) days, after which a hydraulic fracturing frac fleet will be on location 24/7 providing pressure pumping services for another sixty (60) days. After an approximately sixty (60) day flowback period, also operating 24 hours per day, the site will revert to the production phase. At this time it will be attended mostly during daylight hours only. During the production phase two 21,000 gallon water storage tanks will be on location for storage of produced water and will be marked as such. There will be no hydrocarbon storage tanks at the facility. All oil and natural gas will be pipelined off location.

**b) Nearby Schools, High Occupancy Buildings, Waterways**

- Schools - None within 2500' of location.
- High Occupancy Buildings - None within 2500' of location.
- Waterways – Greeley-Loveland Irrigation Canal approximately 1,950' south of the facility.

**c) Site Safety Requirements and General Safety Information**

The minimum personal protective equipment (PPE) to enter any MRG production location includes hard hat, safety glasses, and safety toe boots. All contractors and visitors are responsible for providing their employees with the appropriate training on and use of PPE while on MRG locations. In addition, all contract personnel entering a MRG location to perform work must understand and abide by MRG's contractor expectations relating to environmental, health, and safety requirements.

The primary hazards that any person must be aware of while on a MRG production location include, but are not limited to, the potential for release of hydrocarbon gases and/or liquids from production equipment/tanks, heavy truck and equipment traffic, loud noise, high pressures, and the potential for a flash fire. These hazards can vary depending on the work being performed.

- d) SDS:** Depending on the operations taking place on location, chemicals stored on-site may vary. In accordance with 49 CFR 1910.1200, Safety Data Sheets (SDS) will be made available for site personnel performing work and for first responders in a centralized location onsite. During the drilling and completion phases SDS will be available in the MRG company representative's trailer. During the production phase SDS will be stored in a mailbox located at the entrance to the site.

**e) Fire Suppression Water Supply**

The nearest currently installed water hydrant is a Town of Johnstown hydrant located on the east side of CR 3 approximately 200' south of the entrance to the facility, with a second Johnstown hydrant located on the east side of CR 3 approximately 400' north of the entrance (Facility Diagram on Page 10). There are a total of 5 Johnstown hydrants in the immediate area, shown on the Cultural Features map on Page 14. The closest City of Loveland hydrant is currently 3,500' NW of the entrance to the site, too far from the facility to be used.

MRG commits to having a certain amount of water storage on-site during all phases, accessible through a 5" Storz fitting with a 30° downward bend. During the drilling and completion phases, one of the proximate water storage tanks will be so equipped. During the production phase the tank or cistern installed for the landscape irrigation system will also be equipped with a 5" Storz fitting.

**f) Production Equipment List**

Item Description	Quantity
Three-phase separators	12
Vapor recovery compressors	4
Water storage tanks	2
Surge vessel	1
Gas sales meter	1
Oil pipeline pump & meter (LACT)	1
Emissions Control Device combustor (ECD)	1

**g) Chemicals stored on-site**

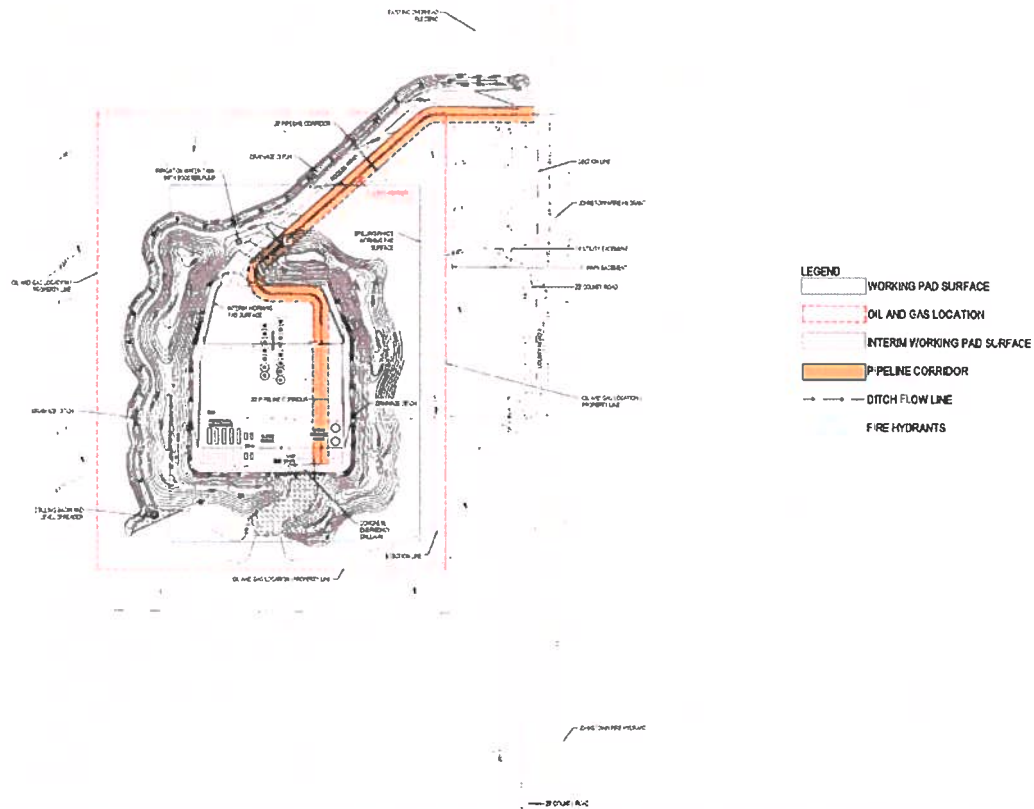
(see table on following page)

	CAS	Flammable Category	NFPA	Volume (gals)
<b>CONSTRUCTION</b>				
Diesel Fuel	68476-34-6	4	1,2,0	2,000
Oils/Lubricants/Hydraulic fluid				
Motor Oil			0,1,0	
Grease			0,1,0	
Hydraulic fluid			0,1,0	
<b>DRILLING</b>				
Diesel Fuel	68476-34-6	4	1,2,0	10,000
Oil Base Mud (OBM) Drilling Fluid				30,000
OBM Base Oil	64741-85-1	4	1,2,0	10,000
Cement	65997-15-1			50,000#
Barite	7727-43-7			50,000#
Soda Ash	497-19-8			5,000#
Lime	1305-62-0			5,000#
Calcium Chloride	10043-52-4			5,000#
Soltex	14808-60-7			5,000#
Oils/Lubricants/Hydraulic fluid				
<b>COMPLETION - Frac</b>				
Diesel Fuel	68476-34-6	4	1,2,0	10,000
Friction Reducer	7647-14-5			20,000
Biocide	1310-73-2			5,000
Hydrochloric Acid	7647-01-0			5,000
Clay Stabilizer	NA			5,000
Scale Inhibitor	67-56-1	3	2,3,0	5,000
Surfactant	67-63-0	2	2,3,0	5,000
Sand	14808-60-7			500,000#
Oils/Lubricants/Hydraulic fluid				
<b>COMPLETION - Flowback</b>				
Diesel Fuel	68476-34-6	4	1,2,0	1,000
Oils/Lubricants/Hydraulic fluid				
Crude Oil	8002-05-9	1	2,3,0	20,000
Natural Gas	74-82-8	1	1,4,0	
<b>COMPLETION - Drillout &amp; Tubing</b>				
Diesel Fuel	68476-34-6	4	1,2,0	2,000
Oils/Lubricants/Hydraulic fluid				
Crude Oil	8002-05-9	1	2,3,0	20,000
Natural Gas	74-82-8	1	1,4,0	
<b>PRODUCTION</b>				
Crude Oil	8002-05-9	1	2,3,0	35,000
Natural Gas	74-82-8	1	1,4,0	
Methanol	67-56-1	2	1,3,0	1,000



## **SECTION 5 – MAPS AND DRAWINGS**

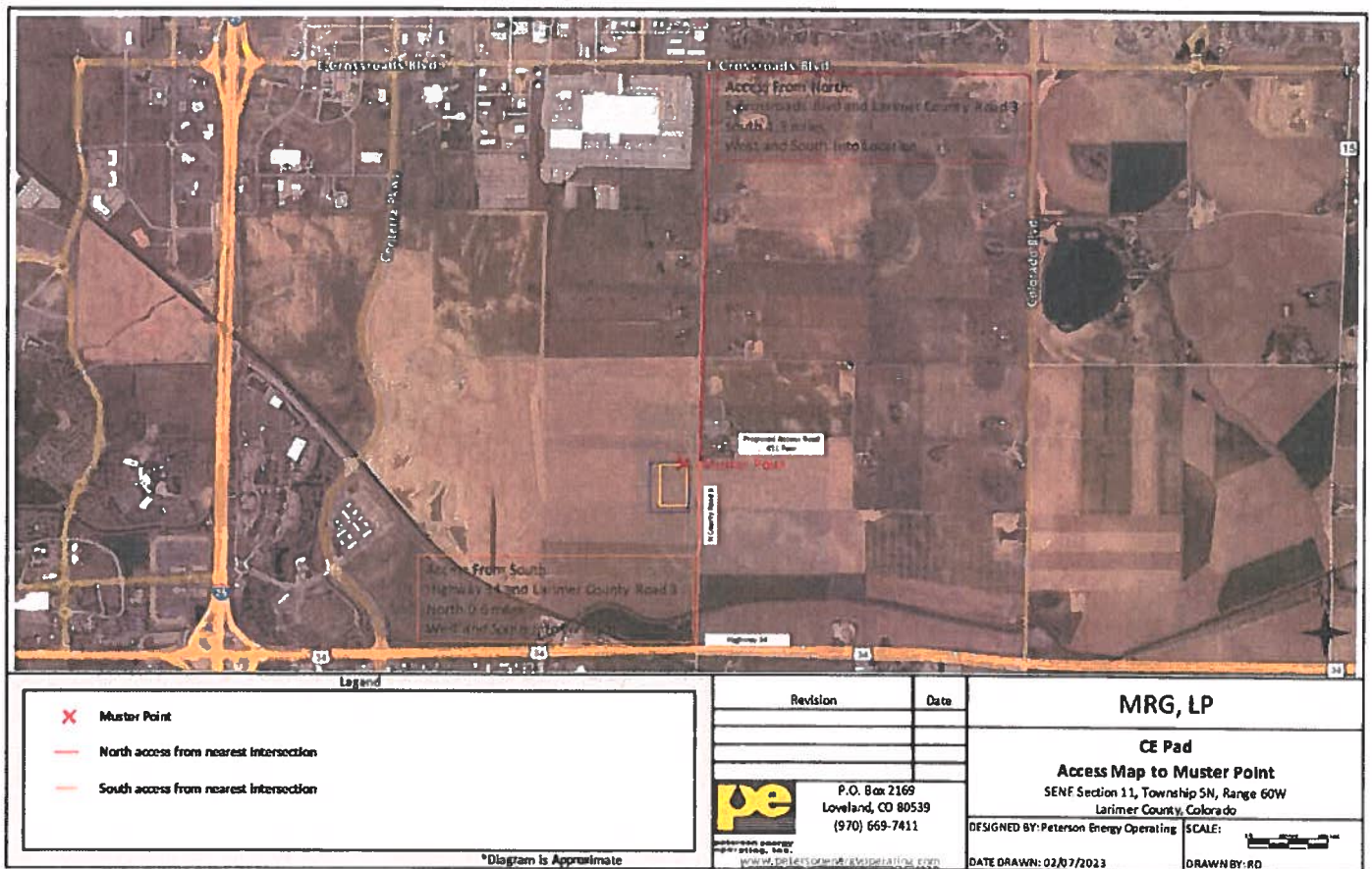
SECTION 11  
TOWNSHIP 34N  
RANGE 104N  
8TH PLAT  
LAWRENCE COUNTY, CO



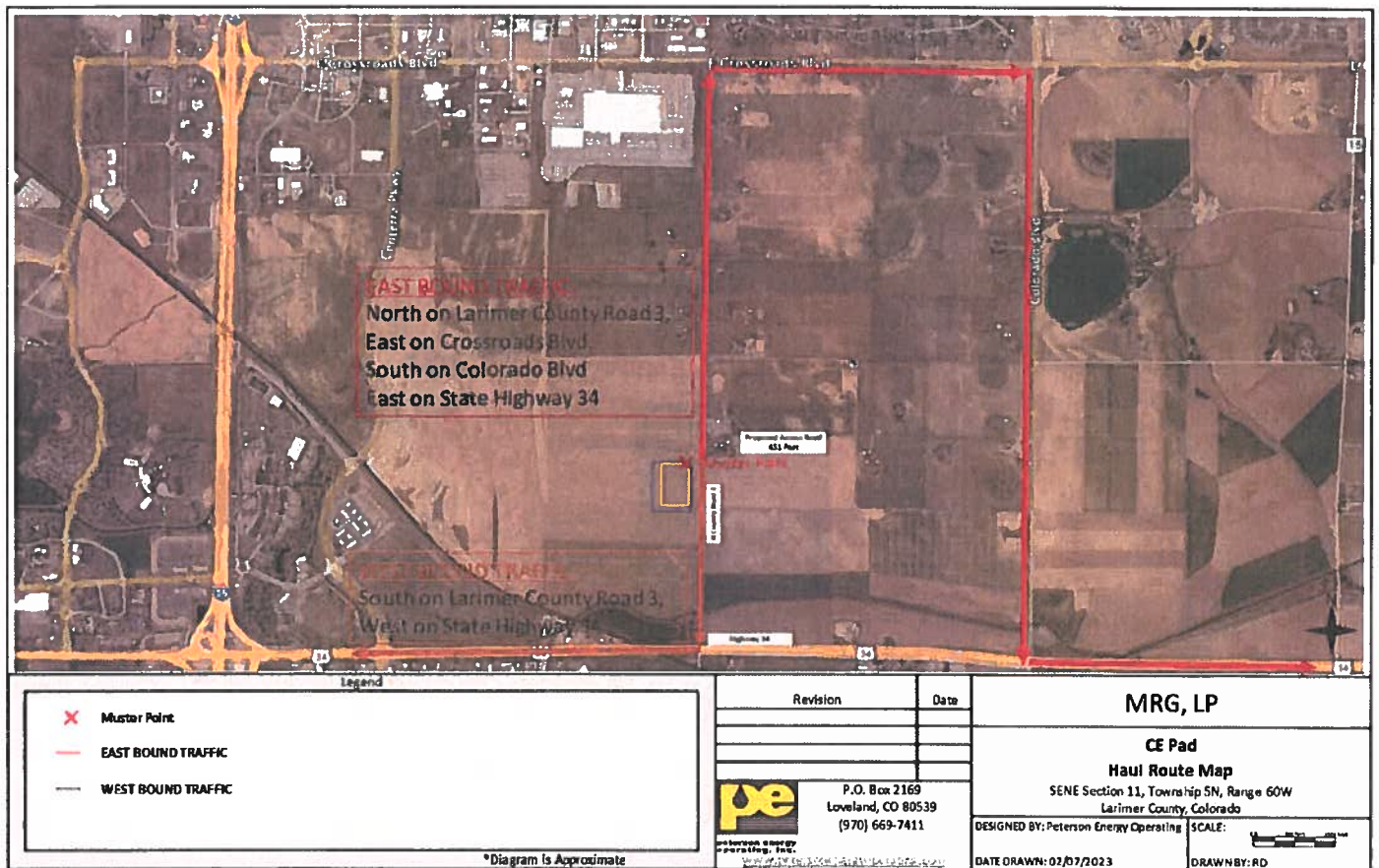
- LEGEND
- WORKING PAD SURFACE
  - OIL AND GAS LOCATION
  - INTERIM WORKING PAD SURFACE
  - PIPELINE CORRIDOR
  - DITCH FLOW LINE
  - FIRE HYDRANTS



## Project Location Access Map



## Haul Route /HazMat Delivery Route Map



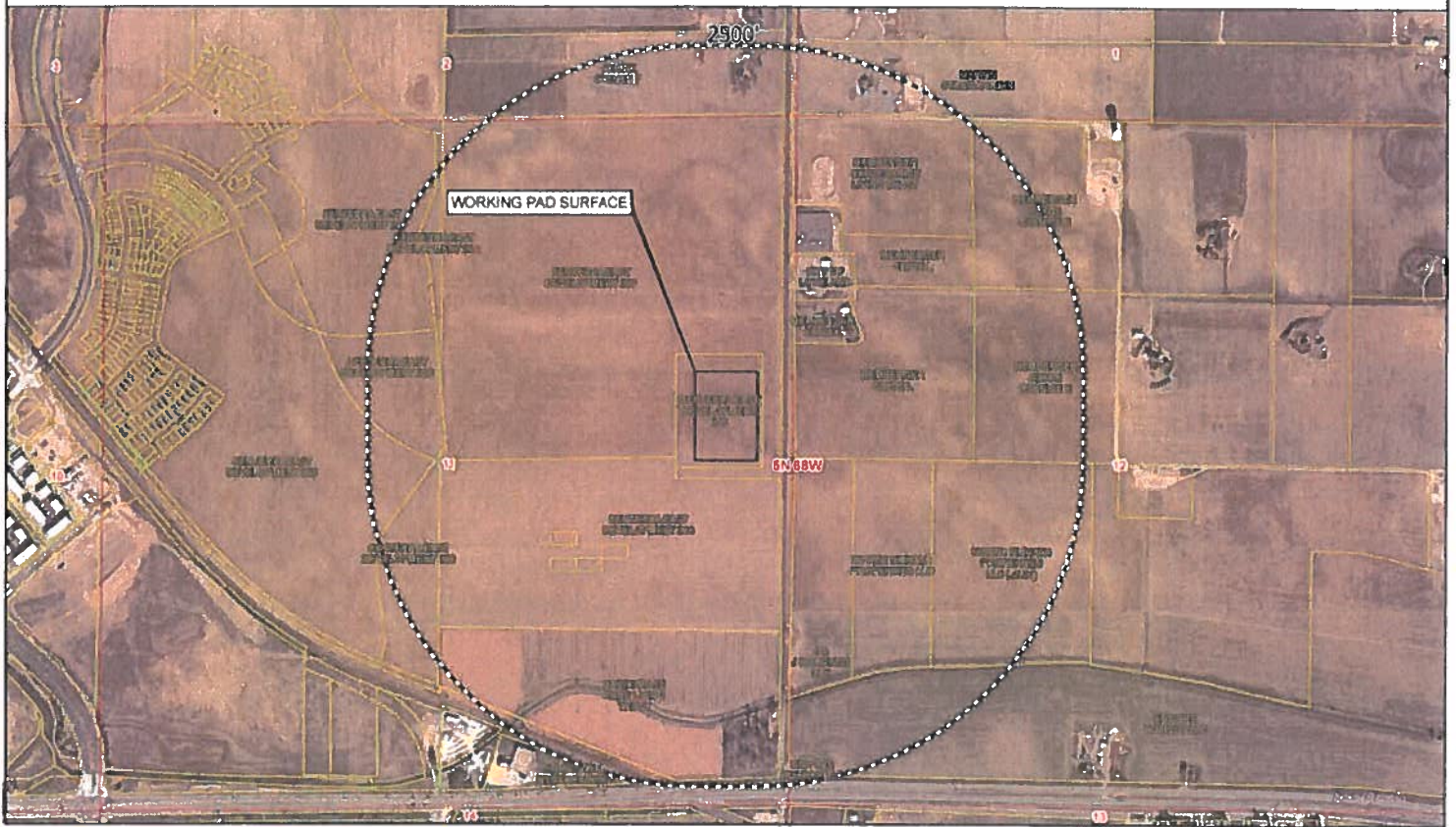




MRG, LP

# CENTERRA EAST PAD

Parcel Owners within 2500'



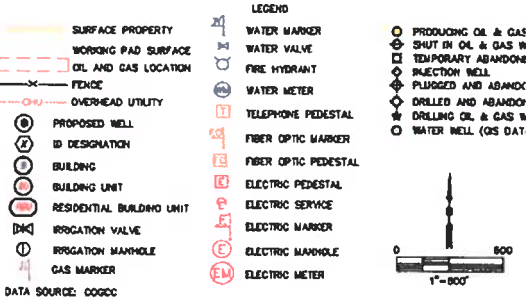
Lat40°, Inc. 6250 W. 10th Street, Unit 2, Greeley, CO 970-515-5294

CULTURAL FEATURES

CE PAD  
MRG, LP



# OF CULTURAL FEATURES WITHIN	0-500'	501-1000'	1001-2000'
BUILDING UNIT	0	1	0
RESIDENTIAL BUILDING UNIT	0	1	0
HIGH OCCUPANCY BUILDING UNIT	0	0	0
SCHOOL PROPERTY	0	0	0
SCHOOL FACILITY	0	0	0
DESIGNATED OUTSIDE ACTIVITY AREA	0	0	0



300' MAP FOR SURFACE WATER IMPROVEMENTS  
OVERMENTS SHOWN AND LISTED HEREIN THAT ARE LYING OUTSIDE THE SURFACE  
AY HAVE BEEN OBTAINED FROM THE AERIAL PHOTO AND OTHER PUBLICLY AVAILABLE  
COURACY AND COMPLETENESS OF SAID IMPROVEMENTS MAY NOT HAVE BEEN VERIFIED  
IC. EXISTING CONDITIONS MAY DIFFER FROM WHAT IS SHOWN.

## **SECTION 6 – SPILL RESPONSE AND CLEAN-UP**

### **a) Spill Response**

Once a release has been discovered, the leak will be immediately stopped and contained if safe to do so. There will be no hydrocarbon storage tanks on this facility. There will be 13 oil separation vessels containing amounts ranging from 1,000 to 4,000 gallons each for a total of 35,000 gallons of crude oil stored onsite. The facility will be constructed with a perimeter drainage ditch which will channel any spills to a concrete spillway structure on the south end. MRG will maintain sufficient absorbent material onsite to provide containment at this spillway. When containing a spill; a combination of sorbent rolls, pads, mats, socks, or containment booms may be deployed. These materials will be provided by MRG and kept on-site. During a spill, efforts will be made to minimize contact with live vegetation, nearby drainages, ditches, rivers, creeks, or streams. If the release is outside of secondary containment or poses a threat to flow off site, or impact environmentally sensitive areas, the spill response contractor should be notified for cleanup assistance and for construction of earthen berms to keep spilled material contained and from spreading, and for removal and disposal of spilled materials and contaminated soils.

Before the Drilling phase begins, MRG will be contracted with a well control company, Wild Well Control, who has assets located in Greely and can be on location quickly in the event a well control situation occurs or appears imminent. MRG will also be contracted with an environmental response company, Custom Environmental Services with assets located in Arvada who can respond in the event MRG needs additional cleanup assistance such as containment material, backhoes, or industrial vacuum trucks.

### **b) Spill Reporting**

The person reporting a spill will supply the minimum spill assessment information to provide a complete understanding of the incident as possible to local, state, or federal agencies if applicable. Some initial spill response actions and information that may be reported are presented below:

- A spill/release will be reported to the Loveland LEPC if released material is property of MRG and meets the reporting thresholds mandated by Section 304 of the Emergency Planning and Community Right-To-Know Act (EPCRA).
  - A spill/release will be reported to COGCC if it meets the reporting threshold of one barrel outside of secondary containment and five barrels inside secondary containment, or any spill/release threatening waters of the state, a residence or occupied structure, wildlife, livestock or public byway.
- c) A spill/release will be reported to the CDPHE if released material is in the custody of a third party for spills meeting CDPHE reporting thresholds or are of any size that impact or threaten to impact waters of the state, a residence or occupied structure, wildlife, livestock or public byway.
- d) Once a spill is determined reportable, there is a 24-hour deadline to make initial notification to the COGCC, LEPC and CDPHE depending on the product ownership. Spills/releases in the custody of MRG will be reported by a Company representative. Spills/releases in the custody of a third party will be reported by the responsible company's EHS Department to the appropriate agency and to MRG.
- These regulatory guidelines will be strictly followed by MRG and any contractors operating under MRG guidance during all activities at the facility.

## **SECTION 7 – REPORTABLE QUANTITIES**

### **a) Reportable Quantities**

Mandated by Section 312 of the Emergency Planning and Community Right-To-Know Act (EPCRA) – also known as SARA Title III – the Tier II form captures information about the types, quantities, and locations of hazardous chemicals at a given facility. The form also lists contact information for the facility's designated emergency point-of-contact.

Methane, Ethane, Propane and Benzene are on the EPA's Lists of Lists. While they will not be stored on site in reportable quantities, they are known to be contained in crude oil and natural gas.

### **b. Reporting Requirements**

Per 40 CFR Part 370, MRG will submit a Tier II report to the State of Colorado every year before March 1<sup>st</sup>.

## **SECTION 8 – EVACUATION INFORMATION**

### **a. Evacuation Plan Procedures (public)**

The procedure to be used in alerting the public in the event of an incident which could pose a threat to life or property will be arranged and coordinated with LFRA.

In the event of an actual emergency, the following steps will be immediately taken:

1. The MRG representative will immediately notify first responders (911), to warn the public of a potential chemical exposure.
2. First responders may conduct door to door evacuation notices as necessary, in addition to reverse 911.
3. The MRG representative responsible for employees and contract personnel will monitor essential and non-essential personnel traffic on or near the incident site.
4. General:
  - a. The area included inside the facility fence is considered to be the zone with the maximum potential hazard. When it is determined that conditions exist which create an additional exposure area vulnerable to possible hazard beyond the facility fencing, traffic may be diverted and residences in the additional hazardous area may be evacuated.
  - b. In the event of an incident, after the residences have been evacuated and traffic diverted, it is expected that local authorities will have arrived and within a few hours will have assumed direction of and control of the public.
  - c. MRG personnel will cooperate with these authorities to the fullest extent possible and will make every attempt to supply accurate facility information and give advice to authorities to help deal with the incident, control rumors and prevent the spread of social media misinformation.



**Nearby Residences:**

Residence Address	Approx. Distance from Site	Homeowner/Tenant	Home phone	Cell phone
2490 N. CR 3	750' NE	Clyde Hemberger, owner	970-663- 2970	970-203- 4493
1431 N. CR 3	2,100' S	Steve Harari, owner		970-204- 9800
1431 N. CR 3	2,100' S	Brent Davis, tenant		970-302- 1257
1431 N. CR 3	2,100' S	Katy Davis, tenant		970-698- 1238
3077 N. CR 3	2,500' N	Steve & Gayle Schink		970-215- 4771

## **SECTION – 9 TRAINING AND EXERCISES**

The National Incident Management System (NIMS) guides all levels of government, nongovernmental organizations and the private sector to work together to prevent, protect against, mitigate, respond to and recover from incidents.

NIMS provides stakeholders across the whole community with the shared vocabulary, systems and processes to successfully deliver the capabilities described in the National Preparedness System. NIMS defines operational systems that guide how personnel work together during incidents.

MRG personnel will play a vital role in the Incident Management System (IMS) during an incident. MRG has a significant impact on local, regional, and national economic recovery, and is part of the whole community and essential to the function of the Community Lifelines.

To maximize MRG's impact and participation in incident operations, MRG commits to coordinate and integrate with LFRA first responders, including annual planning, training, and preparedness exercises. Exercises are an important component of testing an organization's response readiness, training and familiarity with various emergency response scenarios, participation and engagement with local and or state agencies, and to develop lessons learned to improve emergency response capabilities.

MRG proposes to at a minimum conduct tours of the facility for LFRA personnel and crews during all operations phases: drilling through production. The equipment layout and hazards present are different in all phases. LFRA personnel should be familiar with the layout of the facility and the equipment onsite for all development phases.

MRG and LFRA supervisory personnel also are committed to developing additional planning, training and preparedness exercises appropriate to ensure area first responders are prepared to protect the community in the event of an incident at the facility.

## **SECTION – 10 COORDINATION WITH FIRST RESPONDERS**

- a) In the event of an emergency requiring LFRA assistance, Unified Command will be established between the MRG appointed company representative on location and first responders present. An Incident Command Post (ICP) and staging area will be established based on conditions present at time of incident.
- b) MRG's and LFRA have reviewed this EAP and have discussed coordination efforts in the event of an emergency situation requiring first responder assistance.

## **SECTION – 11 PLAN REVIEW AND UPDATE PROCEDURES**

- a) Multi-year plan review and update:  
This plan will be reviewed and updated every five (5) years or after a change in personnel, operations or ownership.
- b) Post incident plan review and update:  
This plan will be reviewed after a spill/release or incident to determine whether plan components should be updated or changed.