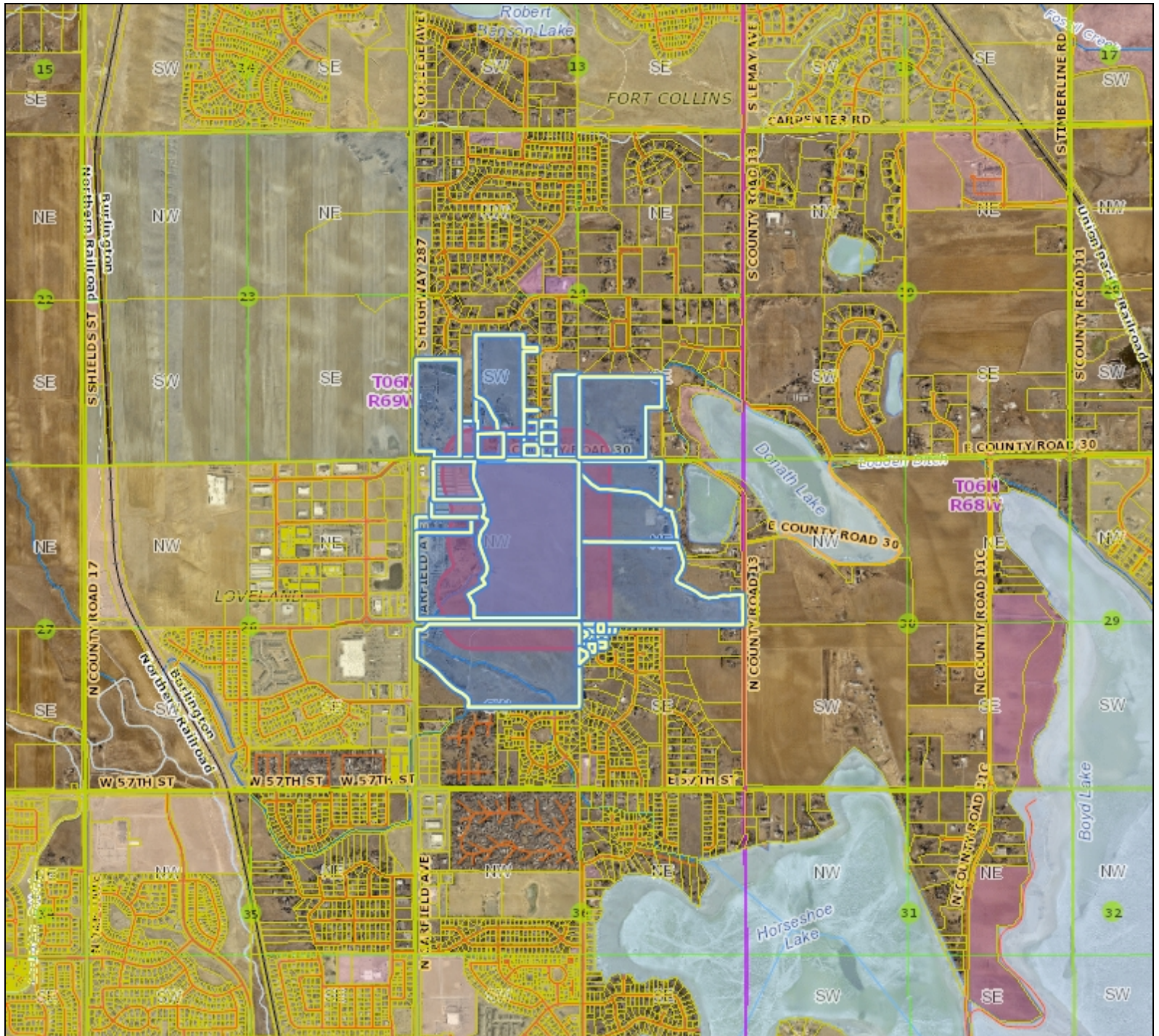


# Larimer County Web Map



## Legend

- Tax Parcels
- PLSS Township and Range
- PLSS Sections
- PLSS Quarter Sections
- Railroads
- Rivers and Streams
- County Boundary
- Rocky Mountain National Park
- Incorporated Areas
- City or Town

COLARI21-SID-LTD-2INCH.sid  
 Red: Band\_1  
 Green: Band\_2  
 Blue: Band\_3  
 COLARI21-SID-AW-6INCH.sid

## Notes

0.3 0 0.3 Miles

Scale  
1: 26,788



Date Prepared: 12/23/2022 9:26:12 AM

This map was created by Larimer County GIS using data from multiple sources for informal purposes only. This map may not reflect recent updates prior to the date of printing. Larimer County makes no warranty or guarantee concerning the completeness, accuracy, or reliability of the content represented.