



Open Lands Advisory Commission (OLAC)



City Council Study Session
July 26, 2022



About the Commission

The Commission was established on October 15, 1996 with 9 members

Members and Liaisons:

Adam Beeco- Vice Chair (2020)

Gale Bernhardt (2007)

Jim Edmiston (2020)

Michael Hinterberg (2017)

David LaGreca (2021)

Jim Roode (2011)

Barbara Schultz (2020)

Jean Whittaker (2015)

William Zawacki- Chair (2004)

Jacki Marsh- City Council Liaison

John Mallo- City Council Alternate

Marilyn Hilgenberg- Staff Liaison

Debbie Eley- Staff Admin Liaison

Daylan Figgs- Larimer County Liaison



What's Included?

- TRAILS (59 miles)
 - 21-mile trail loop
 - Connective trails and spurs
 - Regional Trails
 - Soft-Surface trails
- OPEN LANDS (5,443 acres – 18 publicly accessible sites)

MAINTENANCE/IMPROVEMENTS

COMMUNITY ENGAGEMENT

- Environmental Education
- Volunteers
- Community Stewardship
- Public Relations/Media Communications

STRATEGIC PLANNING/MANAGEMENT

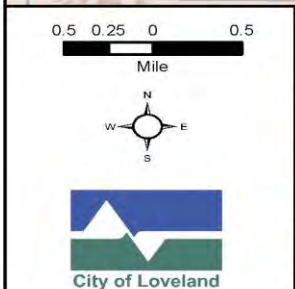
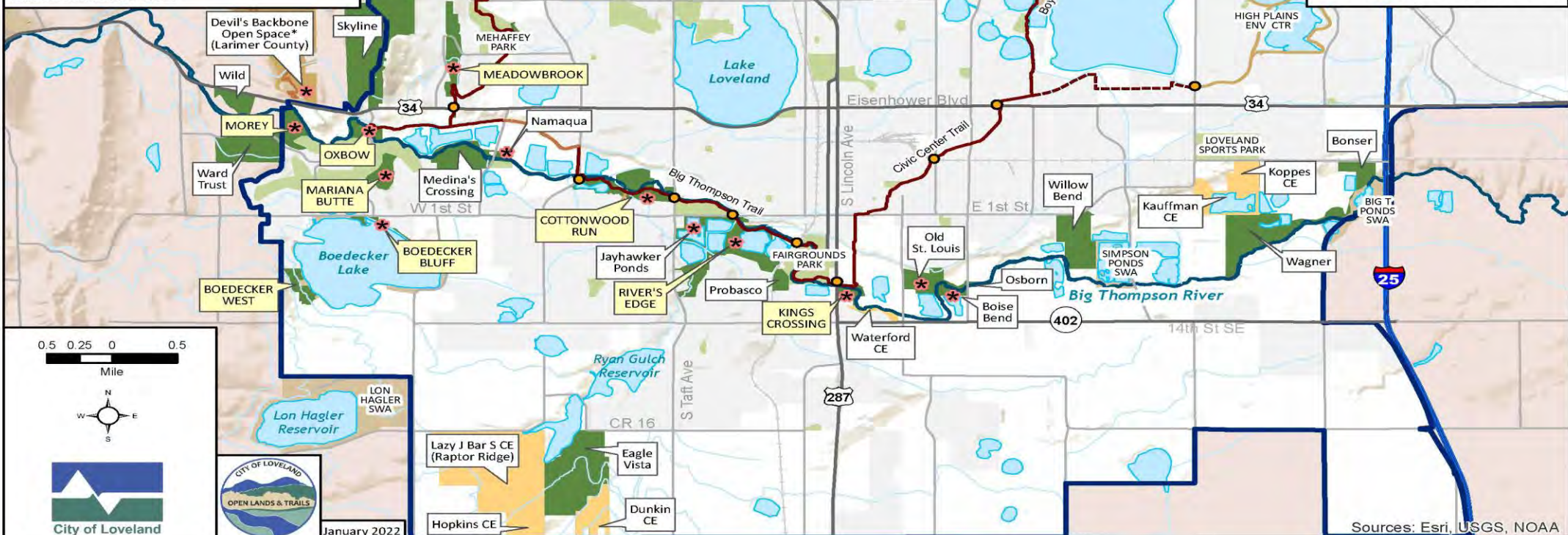


ACQUIRE MANAGE MAINTAIN ENHANCE EDUCATE

Boedecker Bluff: 4750 W 1st St, S of Rossum Dr
 Boedecker West: SW 14th St + Swainsona Dr
 Boise Bend: 1225 S Boise Ave
 Bonser: 5664 E CR 20E
 Boyd Lake SP: 6500 N CR 11C
 Centennial: 704 W 1st St
 Cottonwood Run: Taft-Wilson along Big T
 (S of river open, N of river closed)
 Dakota Ridge: 2995 Morning Dr, 4286 W 43rd St
 Devil's Backbone (Lar Co): 1725 Hidden Valley Dr
 Eagle Vista: 2396 & 2400 W CR16
 Emerald Glen: 3900 N Wilson Ave
 King's Crossing: 990 S Lincoln Ave
 Mariana Butte: 701 Clubhouse Dr
 Meadowbrook: 2000 Cascade Ave
 Medina's Crossing: 731 N Namaqua Ave (S annexed)
 Morey Wildlife Reserve: 5439 Cedar Valley Dr
 Namaqua: 816 N CR 19E (Namaqua Ave)
 Old St. Louis: 1010 S St Louis Ave, 705 S Madison Ave
 Osborn: S Boise Ave SE + Big T River (SE)
 Oxbow: 1135 (west) & 1140 (east) Rossum Dr
 Prairie Ridge: 6400 N Wilson Ave
 Probasco: 914 S Railroad Ave
 River's Edge: 960 & 970 W 1st St, 715 S Roosevelt Ave
 Round Mountain: 1300 W Hwy 34
 Skyline: 4459 & 4463 W Eisenhower Blvd,
 2411 Morning Dr, 2109 Ponderosa Dr
 Sunset Vista: 1323 W 57th St
 Trailwood: Trailwood Dr
 Viestenz-Smith Mtn Pk: 1211 W Hwy 34
 Wagner: E CR 20
 Ward Trust: 5600 & 5705 Cedar Valley Dr
 Wild: 5608 W Hwy 34
 Willow Bend: 2538 E 1st St

CITY OF LOVELAND OPEN LANDS & NATURAL AREAS

- Legend**
- OPEN TO PUBLIC
 - ANNEXED
 - Loveland Open Lands
 - Parks & Golf Courses
 - Other Open Lands
 - Conservation Easements (CE) (no public access)
 - Existing Recreation Trail
 - Proposed Trails (approx)
 - Soft-surface Trails
 - Existing Trails (by others)
 - Trail Underpass
 - Big Thompson River
 - Canals & Ditches
 - Growth Management Area



January 2022

Sources: Esri, USGS, NOAA



OPEN LANDS

AMENITIES/RECREATION OPPORTUNITIES

| | | | | | | | | | | | |
|--|----------------|---|---|---|---|---|---|-----|---|---|---|
| Boedecker Bluff 4750 W. First St. | | | | ✓ | ✓ | ✓ | | Fee | | ✓ | ✓ |
| Boise Bend 1225 S. Boise Ave. | ✓ | | | ✓ | | ✓ | | ✓ | | ✓ | ✓ |
| Boyd Lake (State Parks Partnership) 6500 N. Cty. Rd. 11C | ✓ | ✓ | ✓ | ✓ | | | ✓ | ✓ | | ✓ | ✓ |
| Cottonwood Run Taft-Wilson along Big Thompson River | ✓ at Wilson | | | ✓ | ✓ | ✓ | ✓ | ✓ | | ✓ | ✓ |
| Devil's Backbone (Cty. Partnership) 1725 Hidden Valley Dr. | ✓ | ✓ | ✓ | ✓ | ✓ | ✓ | | | | ✓ | ✓ |
| Emerald Glen Wilson Ave. & 43rd St. | | | | ✓ | | | ✓ | | | ✓ | ✓ |
| King's Crossing 990 S. Lincoln Ave. | ✓ | | | ✓ | | ✓ | ✓ | ✓ | | ✓ | ✓ |
| Mariana Butte 701 Clubhouse Dr. | ✓ | ✓ | | ✓ | | ✓ | | | | ✓ | ✓ |
| Meadowbrook 2000 Cascade Ave. | | | | ✓ | | ✓ | ✓ | | | ✓ | ✓ |
| Morey Wildlife Reserve 5439 Cedar Valley Dr. | | ✓ | | ✓ | | ✓ | | ✓ | | | ✓ |
| Namaqua (and Park) 816 N. Cty. Rd. 19E (Namaqua Rd.) | ✓ | ✓ | ✓ | | | | | ✓ | | ✓ | ✓ |
| Old St. Louis 1010 S. St. Louis Ave. | ✓ | | | ✓ | ✓ | ✓ | ✓ | ✓ | | ✓ | ✓ |
| Oxbow 1135 & 1140 Rossum Dr. | | | ✓ | ✓ | ✓ | ✓ | ✓ | ✓ | | ✓ | ✓ |
| Prairie Ridge 6400 N. Wilson Ave. | ✓ | ✓ | | ✓ | ✓ | ✓ | | | | | ✓ |
| River's Edge 960 W. First St. | ✓ | ✓ | ✓ | ✓ | ✓ | ✓ | ✓ | ✓ | ✓ | ✓ | ✓ |
| Round Mountain 1300 W. Highway 34 | ✓ | ✓ | | ✓ | ✓ | ✓ | | | | ✓ | ✓ |
| Sunset Vista 1323 W. 57th St. | ✓ | ✓ | ✓ | ✓ | ✓ | ✓ | | | | ✓ | ✓ |
| Viestenz-Smith (Open April-October) 1211 W. Highway 34 | ✓ | ✓ | ✓ | ✓ | ✓ | ✓ | ✓ | ✓ | ✓ | ✓ | ✓ |



Open Lands & Trails BY THE NUMBERS



18 with public access



environmental
education
and
program
participants
attended **128** programs



active volunteers
gave 6,504 hours



visitors
toured the
EE cabin
at Viestenz-Smith
Mountain Park



30 raptor nests
monitored

22
stewardship
projects



59
trail
miles

29 paved
30 soft-surface



over a million trail users



trail hosts
volunteered

1,402 hours



MILLIONS of
invasive weed
seeds removed
from natural areas

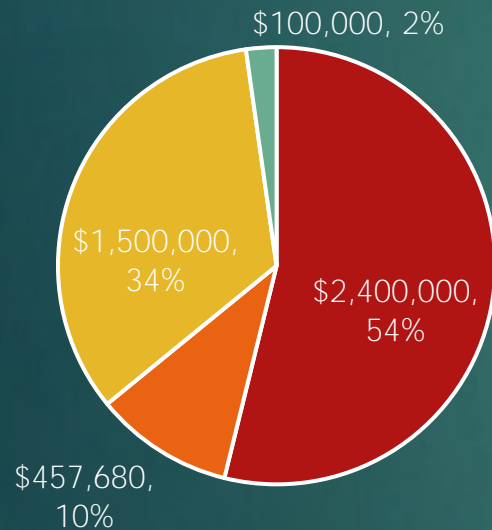
1.74 miles

of
NEW
soft-
surface
and
paved
trails
FOR
PUBLIC
ACCESS

FUNDING

Open Lands

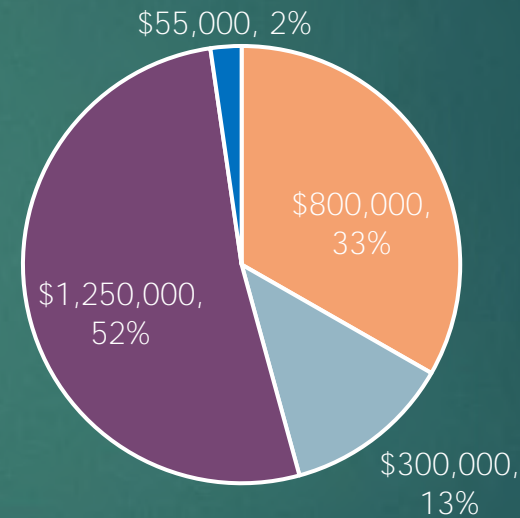
Revenues



■ LC Open Space Tax ■ Open Lands CEF
■ Grants/Donations/Partners ■ Interest

Trails

Revenues



■ Lottery \$ ■ Trails CEF
■ Grants/donations/partners ■ Interest

No funding from the General Fund



Capital Expansion Fees

Boards and Commission Survey Results

8 of 9 Commission Members Participated in the Survey

- ▶ Longevity – 2-5 years (5) and 5+Years (3)
- ▶ Believe Commission acts in accordance with established roles & duties (8)
- ▶ Believe Commission is important to the Community (8)
- ▶ Commission meets Hybrid (6) and Remote (2)
 - ▶ 7 members felt that these meeting formats have been effective
- ▶ 8 members would like to continue with the same frequency of the meetings
- ▶ Agenda and packet process was rated great (8)
- ▶ Staff communication was rated great (8)
- ▶ Council Communication was rated good-great (8)
- ▶ Commission Attendance was rated good-great (8)
- ▶ Commission members didn't feel change was necessary (except adding trails to purview)
- ▶ All 8 Commissioners would recommend to Commission service to others

Open Lands Advisory Commission

The Commission was established on October 15, 1996 with 9 members



The Original Roles and Duties

- Make recommendations to City Council on Loveland's share of Larimer County Open Space Tax.
- Make recommendations concerning the acquisition, disposal, jurisdictional transfers, planning, preservation, development, use and management of open space, natural areas, wildlife habitat, and other open land issues.



What We'd Like to Change

Proposed Revised Roles and Duties and Recommended Name Change

- Make recommendations to City Council on Loveland's Share of Larimer County Open Space Tax, Open Land and Trail Capital Expansion Funds, and City Trails funding.
- Make recommendations concerning the acquisition, disposal, jurisdictional transfers, planning, preservation, development, use and management of open space, natural areas, wildlife habitat, trails and other related issues.
- Request to change the name of the Commission to Open Lands and Trails Advisory Commission (OLTAC)

Guiding Principles, Policies and Plans



- Strategic Plans
- City Comprehensive Plan
- Department Master Plan
- CONNECT Transportation Plan
- Big Thompson River Master Plan
- Our Lands Our Future
- Larimer County Natural Resources Master Plan
- Open Lands & Trails Policies
- Open Lands & Trails Rules and Regulations
- Property Review Documents
- Citizen Surveys and Outreach

“Two of the top rated amenities consistently desired by citizens are trails and open lands”

Short-term Priorities

- ▶ Big Thompson River Acquisitions & Planning
 - ▶ Martin Marietta Property Acquisition
 - ▶ TCM Property east of WWTP Acquisition
 - ▶ Willow Bend Trail and Natural Area Development
 - ▶ Boise Avenue to Willow Bend Trail Design
 - ▶ Big Thompson River Maintenance and Projects (with Storm Water)
 - ▶ Future pedestrian underpass access at I-25 and the Big Thompson River
 - ▶ Brownfield EPA Planning Grant for River Properties
- ▶ Northwest and West Loveland
 - ▶ Skyline and Dakota Ridge Natural Areas Planning and Development
 - ▶ Trail connection from Dakota Ridge to Prairie Ridge Natural Area
- ▶ Southwest Loveland
 - ▶ Front Range Trail south to Berthoud through Eagle Vista Natural Area
- ▶ Trails
 - ▶ Acquisition of easements and construction of Centerra Trail
 - ▶ Acquisition of easements and construction of Namaqua to Wilson Trail

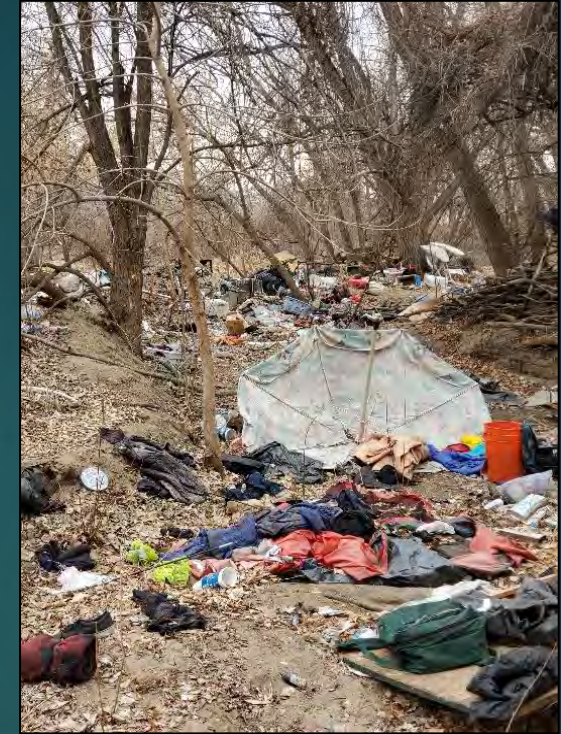
“Trails serve not only a recreational need, but are vital to transportation, community health and air quality”



OLAC Challenges

▶ HOMELESS ENCAMPMENTS

- ▶ Public Safety, Public Health and Fire Danger
- ▶ Environmental & Water Quality Impacts
- ▶ Desecration of valued natural resources
- ▶ Failure to protect our natural areas
- ▶ Failure to enforce rules and regulations
- ▶ Economic Impact and Encampment effects on surrounding properties
- ▶ Encampments are poor visual entrance to the City (Kings Crossing)



▶ Balancing Conservation of Sites While Allowing Public Access

▶ Resources

- ▶ Staffing/Funding
- ▶ Enforcement
- ▶ Volunteers (Education, Trail Hosts and Stewardship)



OLAC appreciates your support!

- 
- Appropriate and assist us in pursuing funding for land conservation, recreation and trails.
 - Include conservation, recreation and trails into City strategic initiatives.
 - Solicit and listen to community feedback.
 - **Participate in our public events, use the City's open lands and trails.**
 - Recognize Open Lands and Trails as ESSENTIAL in Loveland!

*The Commission would like to invite interested members of City Council on an e-bike tour **of Loveland's** Recreation Trail loop. The Commission believes this one of the best ways to **see Loveland's Parks and Recreation System including many of our open lands!***