

# *Connect Loveland*

City of Loveland Police Citizen Advisory Board

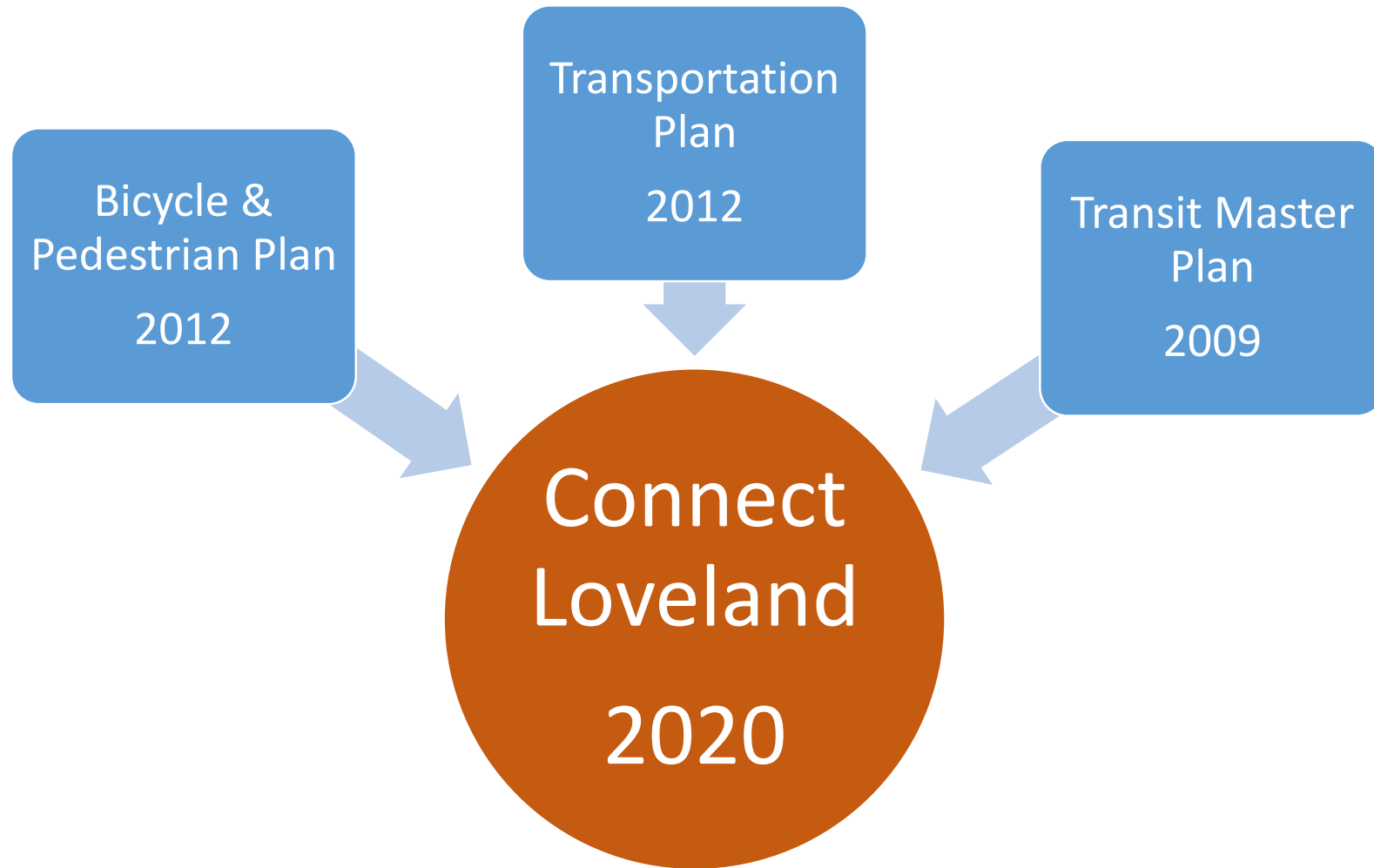
April 1, 2019

David Klockeman, PE, Senior Civil Engineer, Project Manager

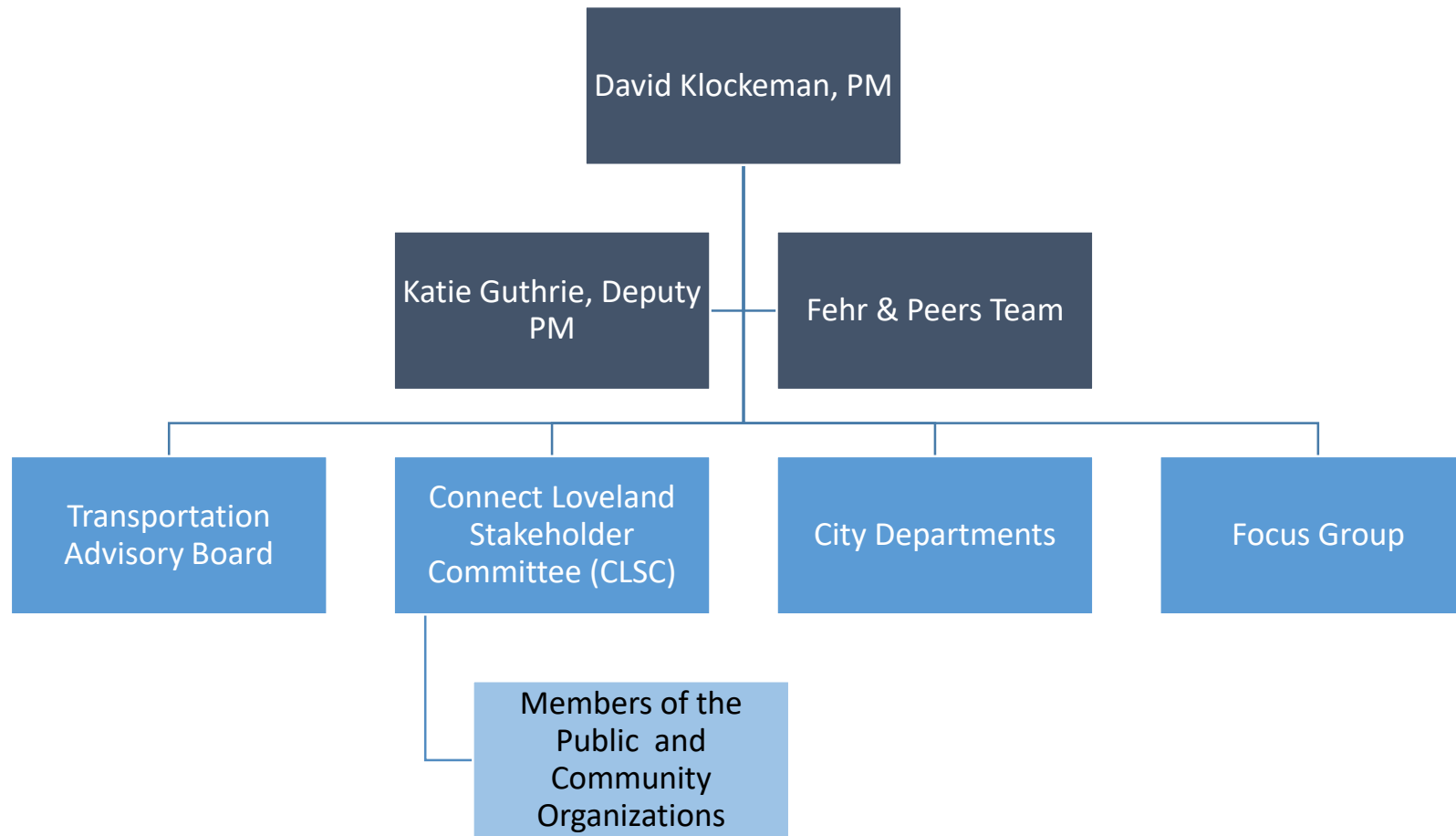
# Today

- What it is
- Organization
- Group definitions
- Open Lands Advisory Commission role
- Project status
- Key steps

# What is this?



# Organization



# Connect Loveland Stakeholder Committee (CLSC) – Draft List

- Youth Advisory Commission
- Visual Arts Commission
- Senior Advisory Board
- Disabilities Advisory Commission
- Parks and Recreation Commission
- **Police Citizen Advisory Board**
- Open Lands Advisory Commission
- Transportation Advisory Board
- North Front Range MPO
- Larimer County Departments
  - Planning
  - Engineering (Transportation)
  - Health and Environment (Built Environment team)
  - Human Services (Office on Aging or PAFC)
- CDOT
- Loveland Housing Authority
- Bike Clubs
  - Loveland Cycling Club
  - PEDAL
- Employers
  - Centerra
  - Health Care – Banner, UCH
  - Group Publishing
  - Others
- Education
  - Thompson School District
  - AIMS
  - FRCC
- DDA
  - Business member(s)
- Realtor/Developer
- Art Community – individuals, collaborative/groups
- Others

# City of Loveland Department Focus Groups

- **Primary**

- Public Works - Lead
- Economic Development
- Development Services
- Parks & Recreation
- Open Lands
- Cultural Services
- Airport

- **Contributors**

- **Police**
- Loveland Fire Rescue Authority
- Library

# Police Citizen Advisory Board

- Representative on Connect Loveland Stakeholder Committee (CLSC)
  - 4 meetings anticipated
- “Connector” to attend Transportation Advisory Board (TAB) Meetings
  - Create a “connection” for two-way information sharing between Project Team, your Board/Commission and other Boards/Commissions
  - May or may not be same representative from CLSC
  - Will join other “Connectors”
  - TAB meets 1<sup>st</sup> Monday of Month at Public Works Administration building
    - Meeting at 4:00 PM
- Will result in greater opportunities to Review Key Items / Provide Guidance

# Project Status

- Existing data collected
- Existing conditions being developed
  - To be completed mid-April
  - To be reported to TAB at May 6 meeting
    - First “Connector” meeting
- Public Engagement Plan being finalized
  - Initial events (outreach, surveys, etc.) taking shape



# Key Parts of Process / Timing

Task	Description	Status / Timeframe
Task 1	Project Kickoff and Work Plan Finalization	Complete
Task 2	Loveland 2018, Policy and Plan Review, Coordination with Travel Behavior, Community Values Survey	Underway
Task 3	Future Loveland	March to May, 2019
Task 4	Goals, Objectives and Vision Statement(s) Development	June to July, 2019
Task 5	Alternatives Development and Testing	September 2019
Task 6	Draft Plan(s) Development	October to December, 2019
Task 7	Final Plan(s)	January to February, 2020
Task 8	Adoption	March / April 2020

# Comments / Questions

David Klockeman, PE, Senior Civil Engineer

(970) 962-2769

[Dave.Klockeman@cityofloveland.org](mailto:Dave.Klockeman@cityofloveland.org)

Katie Guthrie, AICP, Transportation Planner, Deputy Project Manager

(970) 962-2553

[Katie.Guthrie@cityofloveland.org](mailto:Katie.Guthrie@cityofloveland.org)