



Popular Annual **Financial Report**

City of Loveland

For the Fiscal Year Ended December 31, 2016

Final Report Message

This Popular Annual Financial Report (PAFR) is a summary of the financial activities, as well as the accomplishments the City has achieved in 2016. Unlike the Comprehensive Annual Financial Report (CAFR), the PAFR is not an audited document and it does not include details by fund nor does it include the other disclosures required by Generally Accepted Accounting Principles (GAAP). Therefore, the PAFR is not intended to present a complete financial picture of the City in accordance with GAAP. This report is intended to keep you informed about how your tax dollars are being spent in a simple, non-technical format. For more in-depth information, the CAFR is available online at www.cityofloveland.org under the Finance Department Administration, Financial Reports website. The CAFR is an audited document and is prepared in conformance with generally accepted accounting principles.



City Council

From left to right:

Back Row: Don Overcash, Mayor Pro Tem John Fogle, Richard Ball

Middle Row: Hugh McKean, Troy Krenning, Leah Johnson

Front Row: Mayor Cecil Gutierrez, Dave Clark, Joan Shaffer

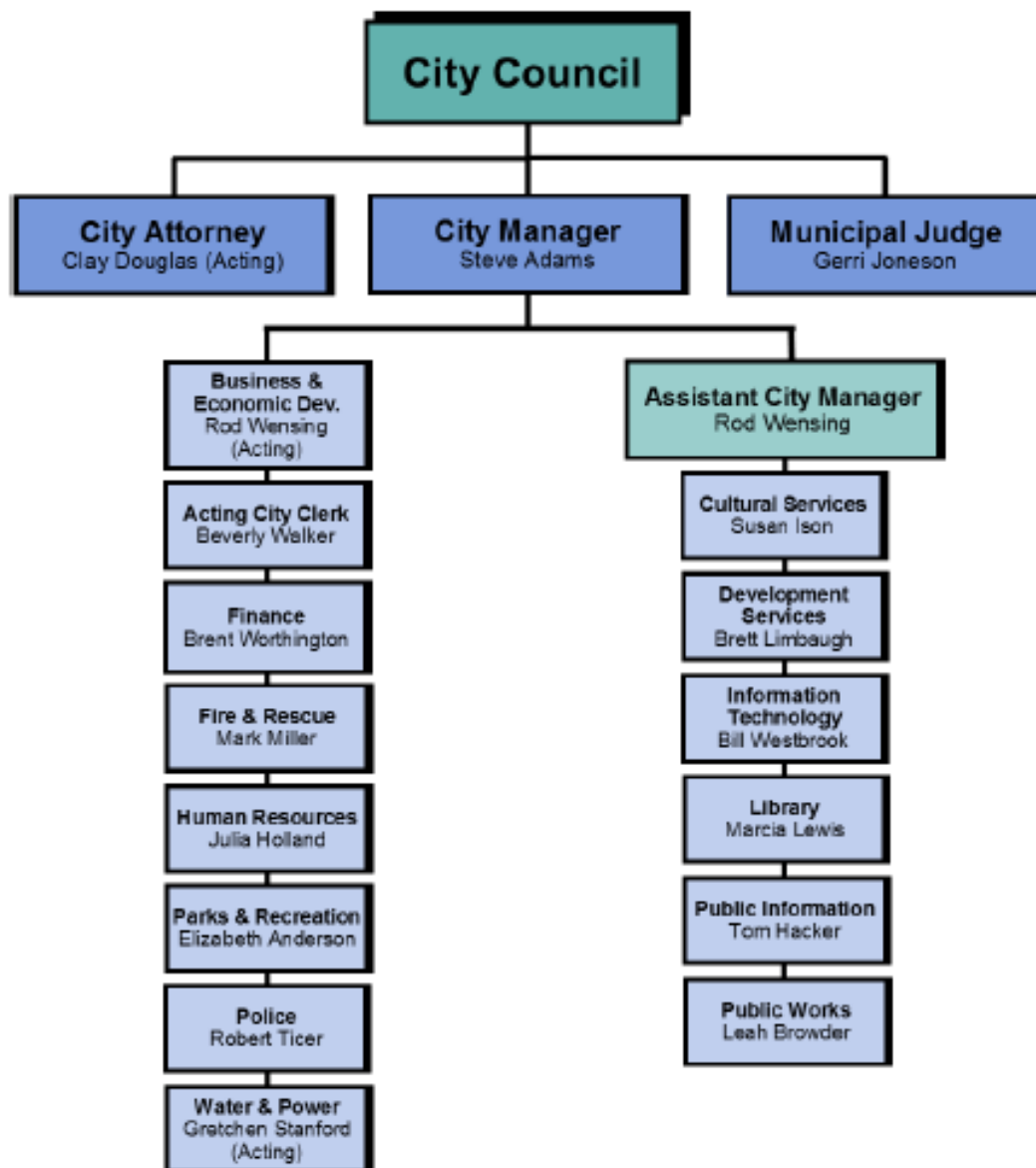
Contents

Organization	3
Quick Facts	4
Awards	5
Accomplishments	6
Balance Sheet	7
Income Statement	8
Revenues by Source	9
Expenditures	10
City Contacts	11



Organizational Chart

City Organizational Chart & Officials



Quick Facts about Loveland

Services Provided: Police, Refuse Collection, Streets, Storm Drainage, Development Review/Permitting, Parks and Recreation, Art Gallery, Museum, Theater, Library, Transit, Airport, Water, Wastewater, Power

Form of Government: Council/Manager Home Rule City

Population: 74,427

Number of Households: 31,404

Median Age: 39.1

County per Capita Income: \$45,318

Incorporated (square miles): 35.32

Acres of Developed Parks: 438

2016 Budget: \$425,821,474

City Employees: 772

Sales and Use Tax Rate: 3.0%

Unemployment Rate: 3.2%

Mill Levy: 9.564

Total Mill Levy: \$8,865,777

Incorporated: 1881

Police Divisions / Units: 12

Miles of Streets: 343

Water Storage Capacity: 20,300,000 gallons

Playgrounds: 28



2016 Top 5 City of Loveland Employers:

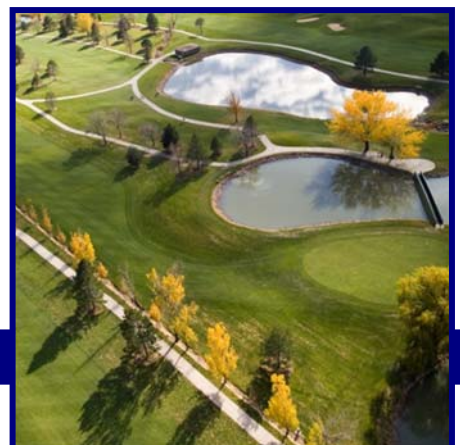
Thompson School District R2-J

Wal-Mart Distribution Center

U. S. Bank

Agrium/Crop Production Services

Hach Company



Awards

Finance:

GFOA Award for Excellence in Financial Reporting - 2015 (36th consecutive year)

GFOA Distinguished Budget Presentation Award - 2016 (32nd consecutive year)

Police:

International Dispatcher of the Year, National Academies for Emergency Dispatch

Economic Development:

Governor's Award for Outstanding Individual Contribution, Colorado Tourism Division, 2016

Loveland Fire Rescue Authority:

Instructor of the Year, Colorado Fire Training Officers Association

Parks & Recreation Department:

Golf Loveland: Columbine Innovation Award
Mariana Butte: Best North Front Range Golf Course, "Colorado Avid Golfer" magazine

Loveland Water and Power:

Reliable Public Power Provider-Platinum Level, American Public Power Association
Rocky Mountain Water Quality Analysts Association Analyst of the Year



Government Finance Officers Association

Award for
Outstanding
Achievement in
Popular Annual
Financial Reporting

Presented to

City of Loveland
Colorado

For its Annual
Financial Report
for the Fiscal Year Ended

December 31, 2015

Jeffrey R. Egan
Executive Director/CEO

City of Loveland Comprehensive Annual Financial Report (CAFR) for the year ended 2016, from which the information in the PAFR has been drawn, was awarded the Certificate of Achievement for Excellence in Financial Reporting by the Government Finance Officers Association of the United States and Canada (GFOA). The Certificate of Achievement is the highest form of recognition for excellence in state and local government financial reporting..

In order to be awarded a Certificate of Achievement, a government unit must publish an easily readable and efficiently organized comprehensive annual financial report, whose contents conform to program standards. Such CAFR must satisfy both generally accepted accounting principles and applicable legal requirements.

A Certificate of Achievement is valid for a period of one year only. We believe our CAFR continues to conform to the Certificate of Achievement program requirements and we are submitting our CAFR for the current year to the GFOA.



Accomplishments

The following is a list of many of the accomplishments completed during 2016.

Economic Development

- ◇ Launched the Foundry project to revitalized downtown Loveland.

Planning, Transportation and Development Review

- ◇ Opened the Development Center to bring real estate development review and building permit processes together under one roof.

Finance

- ◇ Started a more convenient, online payment system for utility payments.

Museum

- ◇ Featured exhibit of works by Picasso, Chagall, Matisse and Miro which is rarely on public view.

Loveland Public Library

- ◇ Featured the Local Author Showcase for Northern Colorado's Authors.

Parks and Recreation

- ◇ New trail opened at Mariana Butte and opened Meadowbrook Natural Area.

Police

- ◇ New phone technology reduces hold time on non-emergent calls to police.

Public Works

- ◇ Recycling center improvements increased convenience to citizens.

Water and Power

- ◇ Completed the Water Treatment Plant expansion on time and under budget.



Balance Sheet

This balance sheet is presented in much more detail in the City's complete CAFR. This is a summary that captures the category sub-totals and compares them to prior years. This may serve as a useful overall indicator of the City's financial position and trends over the last five years.

	2016	2015	2014	2013	2012
Assets					
Current and Other Assets	\$ 275,847,116	\$ 262,225,674	\$ 250,042,011	\$ 259,277,569	\$ 250,375,025
Capital Assets	805,859,716	760,667,464	730,411,607	687,018,764	674,531,372
Total Assets	1,081,706,832	1,022,893,138	980,453,618	946,296,333	924,906,397
Deferred Outflow of Resources	242,331	117,002	-	-	-
Total Assets and Deferred Outflow of Resources	1,081,949,163	1,023,010,140	980,453,618	946,296,333	924,906,397
Liabilities					
Current Liabilities	28,864,281	32,964,105	28,033,004	24,198,859	37,697,881
Non-current Liabilities	24,176,622	21,036,689	10,417,418	10,666,621	10,461,951
Total Liabilities	53,040,903	54,000,794	38,450,422	34,865,480	48,159,832
Deferred Inflows of Resources	21,205,384	19,809,403	18,820,492	18,911,597	
Total Liabilities and Deferred Inflows of Resources	74,246,287	73,810,197	57,270,914	53,777,077	48,159,832
Total Net Position	\$1,007,702,876	\$ 949,199,943	\$ 923,182,704	\$ 892,519,256	\$ 876,746,565



Income Statement

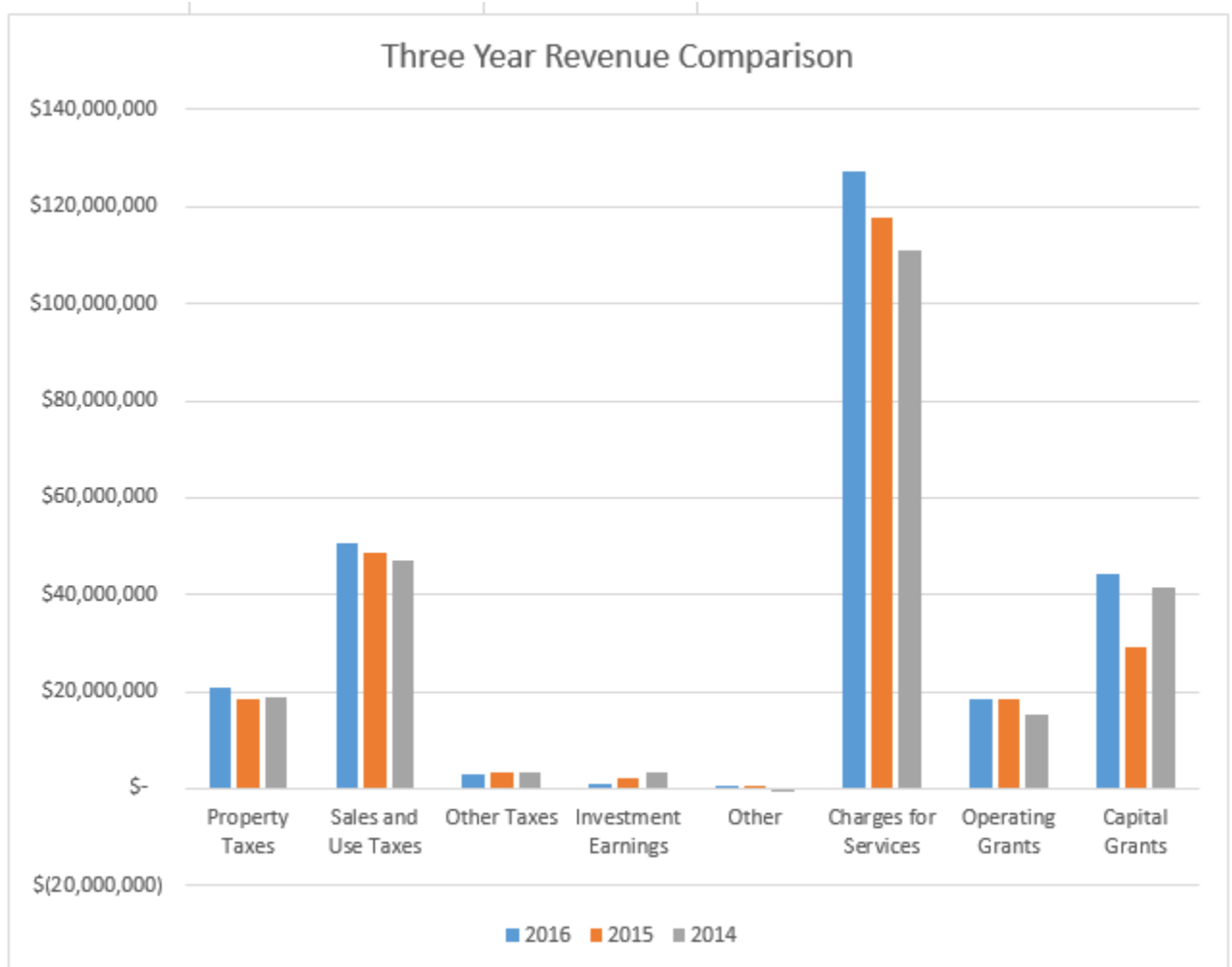
More formally referred to as the Statement of Activities, the City's income statement reflects all the financial activity for the City during the fiscal year ended December 31, 2016. This statement presents information to show how the City's net assets changed during the year as a result of the financial activity. This is a summarized version of the more detailed income statement found in the City's CAFR.

	2016	2015	2014	2013	2012
Revenue	\$ 265,701,816	\$ 238,724,237	\$ 239,318,183	\$ 206,526,207	\$ 192,525,923
Expenses	217,492,438	209,952,968	208,654,735	190,753,516	173,556,886
Increase in Net Position	48,209,378	28,771,269	30,663,448	15,772,691	18,969,037
Net Position-Beginning	959,493,498	920,428,674	892,519,256	876,746,565	857,777,528
Net Position-Ending	\$1,007,702,876	\$ 949,199,943	\$ 923,182,704	\$ 892,519,256	\$ 876,746,565



2016 Revenues by Source

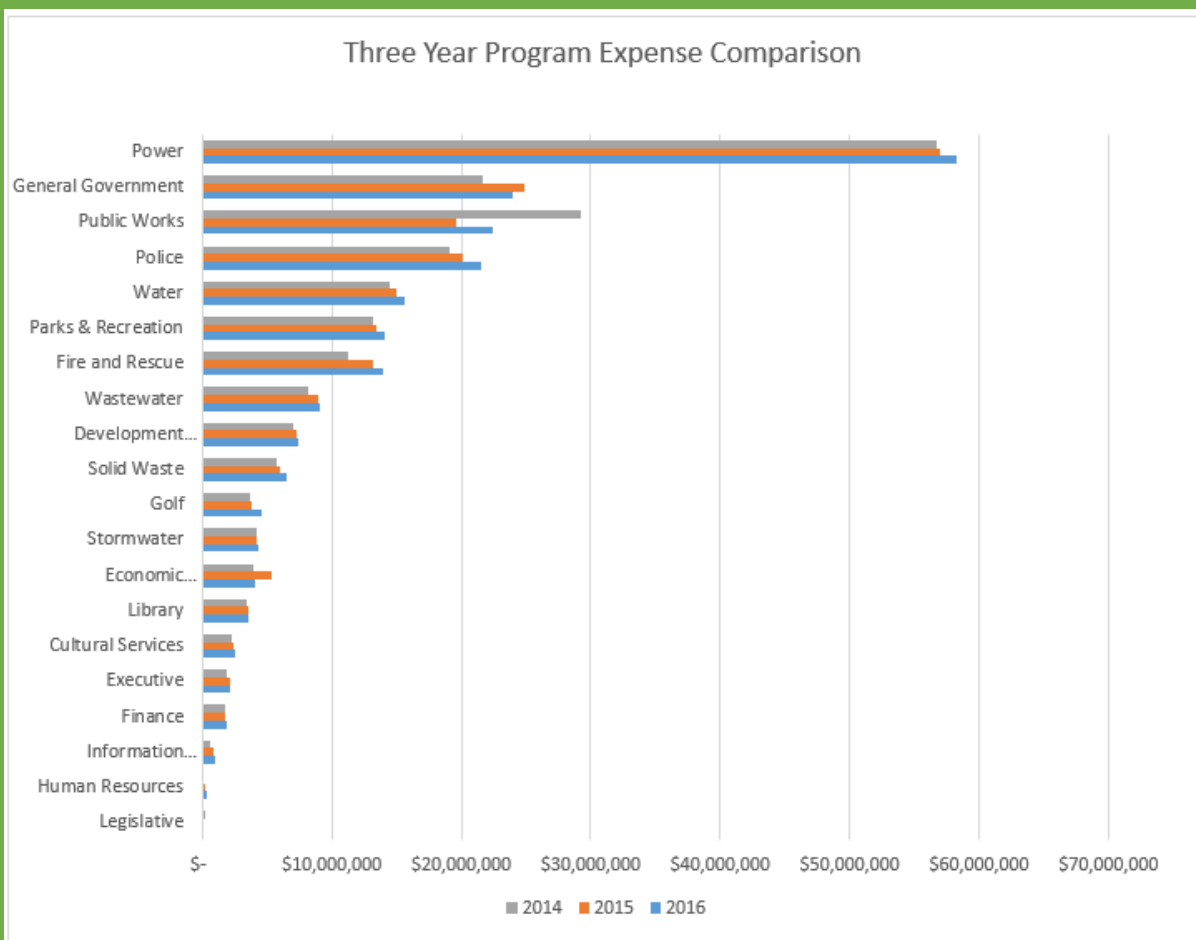
2016 Revenues		
Source	Amount	% of Total
Property Taxes	\$ 20,904,830	7.87%
Sales and Use Taxes	50,527,501	19.02%
Other Taxes	3,010,143	1.13%
Investment Earnings	1,135,920	0.43%
Other	170,947	0.06%
Charges for Services	127,236,173	47.89%
Operating Grants	18,494,003	6.96%
Capital Grants	44,222,299	16.64%
	\$ 265,701,816	



2016 Expenses by Service Area

Expenses

Service Area	Amount	% of Total	Service Area	Amount	% of Total
Legislative	\$ 151,146	0.07%	Solid Waste	6,453,721	2.97%
Human Resources	358,285	0.16%	Development Services	7,391,751	3.40%
Information Technology	983,766	0.45%	Wastewater	9,078,498	4.17%
Finance	1,846,402	0.85%	Fire and Rescue	13,968,518	6.42%
Executive	2,199,258	1.01%	Parks & Recreation	14,149,386	6.51%
Cultural Services	2,522,341	1.16%	Water	15,666,363	7.20%
Library	3,598,465	1.65%	Police	21,508,676	9.89%
Economic Development	4,046,522	1.86%	Public Works	22,454,121	10.32%
Stormwater	4,342,427	2.00%	General Government	24,003,139	11.04%
Golf	4,558,219	2.10%	Power	58,211,434	26.76%
			\$ 217,492,438		



Contact Information

City Website ~ www.cityofloveland.org

Airport ~ 970-962-2850

Cultural Services

Loveland Museum/Gallery ~ 970-962-2410

Loveland Art in Public Places ~ 970-962-2490

Rialto Theater Center ~ 970-962-2120

Development Services ~ 970-962-2436

Economic Development ~ 970-962-2561

Finance ~ 970-962-2318

Fire Rescue ~ 970-962-2497

Human Resources/Employment ~ 970-962-2371

Information Technology ~ 970-962-2335

Library ~ 970-962-2665 or www.lovelandpubliclibrary.org

Parks & Recreation ~ 970-962-2727

Police

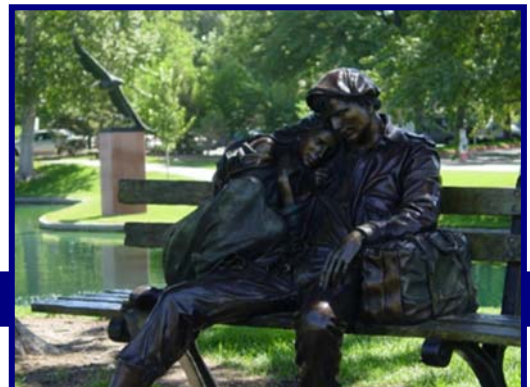
Emergency dial 911

Non-emergency ~ 970-667-2151

Administration ~ 970-962-2212

Public Works ~ 970-962-2524

Water & Power ~ 970-962-3000





For information regarding this report, contact:

Joyce Robinson, Senior Accountant

Joyce. Robinson@cityofloveland.org

P: (970) 962-2313

F: (970) 962-2994

www.CityofLoveland.org



City of Loveland