

# Foundry's puzzle pieces all in place



**The four-story TownePlace Suites** by Marriott, viewed here from the intersection of First Street and Lincoln Avenue, will open in March 2019.

Oz Architecture, the firm handling design work on “The Foundry,” produced in 2016 a dramatic and colorful video animation that takes viewers on a sweeping journey over, around and through the downtown Loveland redevelopment project.

After a screening of the video at a Loveland service club more than year ago, one member offered a reaction that some others seemed to share: “I’ll believe it when I see it.”

This spring those pretty pictures have taken form on two downtown city blocks. Space between First Street and Opera Alley, a half block south of Fourth Street, bounded east and west by Lincoln and Cleveland avenues, accommodates the \$76 million, multi-use complex of five buildings, new streetscapes and

a public plaza that will occupy its nucleus.

On one sunny afternoon in March, the project developers and their City of Loveland partners celebrated major milestones – the “topping off” of two apartment-and-retail buildings and a five-level parking garage, and the groundbreakings for a four-



**The Metropolitan Theater** will feature seven screens and 525 luxury seats with full bar and menu service when it opens in February 2019.



**The animated fly-over video** of The Foundry downtown redevelopment project is featured on the developer's website, [www.foundryloveland.com](http://www.foundryloveland.com).

story downtown hotel and a seven-screen, first-run movie theater.

Commitments from commercial users of the new space and rising interest in apartment leases are indicators that The Foundry will do for downtown Loveland – and the City beyond – exactly what planners had hoped it would.

(see **Foundry** page 2)

"I think this will have the impact that all of us envisioned from the beginning," said Mike Scholl, the City's Economic Development Manager who has guided the project since its inception 2½ years ago.

### **Dream taking shape**

"We began with this dream that downtown could sustain a project that would contribute to the economic and social wellbeing of the entire City. We feel like this meets that objective."

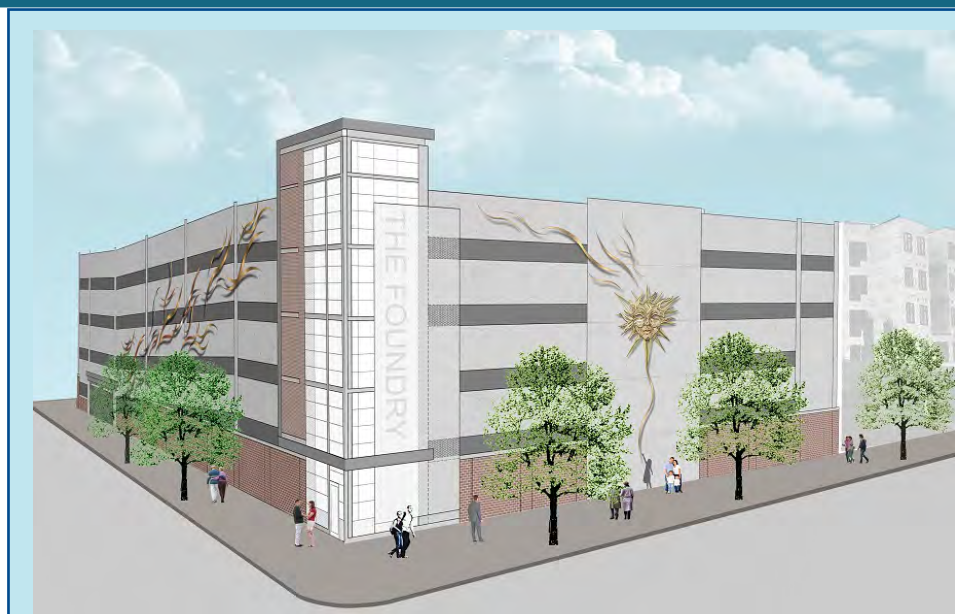
This year's late-summer calendar will feature move-in dates for first residents of the 155 Patina Flats apartments, meeting the goal of raising the downtown district's residential base.

Scholl said Fort Collins-based Brinkman, the project developer/owner, plans announcements this spring of initial leases for portions of the 15,000 square feet of retail and restaurant space on the ground floors of the two Patina Flats buildings, one with frontage on Cleveland Avenue, and a slightly smaller twin on Lincoln Avenue.

Motorists will be able to park in the five-level, 460-space parking garage in mid-summer. The final two pieces of The Foundry's puzzle, the theater and hotel, will open in February and March 2019.

Oz Architecture's fly-through video – see a link on page 1 – indicates how plans change when projects as complex as The Foundry evolve. The video depicts a pair of office buildings on the project's southern end where the new downtown hotel is under construction.

Brinkman President Jay Hardy told the March groundbreaking crowd that the emergence of the hotel



## **City public art program covers parking garage**

After an open competition for art to adorn the five-level parking garage at The Foundry, the City's Visual Arts Commission chose from among five finalists a work by the artist team of James Dinh and Michael Stutz.

Their sculpture titled "Shimmering Hues to Solar Muse," will take three-dimensional form when they install it next fall on the east and south faces of the structure. Dinh and Stutz said they took their cues from the bronze sculpture foundries that make Loveland a world-renowned center for that art.

possibility, but not just any hotel, became a solution as the market for office space softened during the recent past.

### **Name makes a difference**

"For us to get a Marriott or a Hilton was critically important," Hardy said, before introducing the project developer for the 102-room TownePlace Suites by Marriott. Scholl later explained the emphasis on the big brand name.

"What Marriott brings is their reservation system," he said. "They have a nationwide presence that instantly puts Loveland on the map."

Metropolitan Theaters also sent Communication Director Natalie Eig from their Los Angeles headquarters to describe

the multi-screen, luxury theater that will open in early 2019. Eig said the theater at the northwest corner of Third Street and Lincoln Avenue will feature full food and beverage service, plus cushy, powered recliners in each screening room.

The theater has generated plenty of buzz, and a few questions about the need for The Foundry to include one in the plan. Project partners say that ingredient is much more necessity than frill.

"Ask yourself why every major retail center has, as a centerpiece, a movie theater," Scholl said. "The answer is simple. Theaters drive retail business, and retail success is a huge part of this vision. The theater makes it all work."



# City to install flashing yellow turn arrows at majority of busy intersections

The City's Public Works Division has begun work to install new flashing yellow arrows above left-turn lanes throughout the City.

While this new standard is not mandated, the City's Public Works Division has elected to begin installation because flashing yellows have been found to improve safety, increase efficiency and traffic flow, and reduce the number of left-turn lane accidents.

The Federal Highway Administration has found that up to 20 percent fewer crashes occur in intersections where flashing yellow turn lights are present because drivers are more attentive to oncoming traffic and make safer decisions about when to turn than when presented with a green light or green arrow.

The flashing yellow signals enable drivers to turn left even if cars next to them going straight have a red light, as long as the drivers yield to oncoming traffic and safety enhancers.

Flashing yellow turn signals are also useful when traffic flows

are lighter, such as overnight.

A nearly \$600,000 grant through the Federal Highway Safety Improvement Program (HSIP) will be used to install the flashing yellows to approximately 41 intersections in Loveland.

Many residents have likely already driven through the intersection of 22nd and Wilson Avenue where a yellow turn signal has been in place for four years.

Additional intersections slated to receive the lights are Wilson Avenue and U.S. Hwy

34, 50th and Taft Avenue, Boise Avenue and U.S. Hwy 34, 1st Street and Cleveland Avenue and 1st Street and Lincoln Avenue.

## How to use intersections with flashing yellows



### Solid Red Arrow

**STOP!** Remain stopped until the signal changes.



### Steady Yellow Arrow

**WARNING!** The signal is about to turn red and drivers should prepare to stop.



### Flashing Yellow Arrow

**YIELD!** Drivers are allowed to turn, only after yielding to all oncoming traffic, bicycles and pedestrians in the crosswalk/bike-lanes.



### Steady Green Arrow

**GO!** Left turns have the right of way. Oncoming traffic has a red light

## Got Drugs?



**Bring unwanted medications  
for proper disposal**

**National Prescription  
Drug Take-Back Day**

**10 a.m. to 2 p.m., Sat. April 29  
810 E. 10th St.**

## 3-ON-3 HIGH SCHOOL OUTDOOR BASKETBALL LEAGUE PLAY STARTS JUNE 5



**NEW SUMMER  
RECREATION PROGRAMS!  
REGISTRATION  
BEGINS APRIL 30**

Visit [teamsideline.com/loveland](http://teamsideline.com/loveland)  
or call 970.962.2445

**CORNHOLE 2-PERSON LEAGUE  
THURSDAY NIGHTS  
JUNE/JULY**



2nd Annual  
Loveland Parks & Recreation

# PHOTO CONTEST!

**MARCH 1 - MAY 31**

Amateur & professional  
photographers OF ALL AGES  
are invited to enter their best  
original images celebrating  
our community!

Check out  
the website  
for contest  
forms & rules.



**CityofLoveland.org/  
ParksRecreation/PhotoContest**

## Celebrate Loveland's history featuring...



Plus:

- 100<sup>th</sup> Anniversary of Bill Reed school
- Artisan Booths
- Food and much much more!

**10 a.m.-3 p.m. Sat. May 5**



Free fun  
for the  
whole family!



Info:  
Nikki Garshelis@  
cityofloveland.org



27th Annual Exhibition



**2018**



**May 12 – June 17, 2018**



503 N. Lincoln Avenue, Loveland, CO 80537  
(970) 962-2410  
www.lovelandmuseumgallery.org

### Open Lands Activities - May



- 5/5 Guided Bird Walk
- 5/12 Milkweed for Monarchs Planting
- 5/17 PEEPs Preschool Programs
- 5/19 Astronomy Night
- 5/20 Trail Host Volunteer Training

Register & Info: [Offero.cityofloveland.org](http://Offero.cityofloveland.org)

### April is Fair Housing Month

To discuss a fair housing  
complaint or possible housing  
discrimination, call the City's  
Community Partnership Office  
at 962-2517.



MISSOULA  
**CHILDREN'S  
THEATRE**



**SUMMER THEATRE CAMP FOR KIDS!**  
June 25 – 30, 2018

**RIALTO THEATER CENTER**  
228 East Fourth Street • Loveland, CO 80537  
(970) 962-2120 • [rialtotheatercenter.org](http://rialtotheatercenter.org)



**KIDS**

**TO PARKS DAY**  
**SATURDAY MAY 19**

**SPLASH PARKS OPEN**  
**MOBILE RECREATION TRAILER**  
**AND MORE!**



VISIT [CITYOFLOVELAND.ORG/PARKSRECREATION](http://CITYOFLOVELAND.ORG/PARKSRECREATION)  
FOR MORE INFO OR CALL 970.962.2727

City Update is a monthly publication of the City of Loveland. Residents receive City Update according to their utility billing cycle. Timeliness of the information may be affected by recipients' billing schedule. City Update is also available around the first of every month on the City's website at [www.cityofloveland.org](http://www.cityofloveland.org). Your comments are welcome. Please call 962-2302, or email [Tom.Hacker@CityofLoveland.org](mailto:Tom.Hacker@CityofLoveland.org). The City of Loveland is committed to providing equal opportunity for citizens and does not discriminate on the basis of disability, race, color, national origin, religion, sexual orientation or gender. The City will make reasonable accommodations for citizens in accordance with the Americans with Disabilities Act. For more information, please contact the City's ADA Coordinator at 962-3319.

Follow us on  
Facebook,  
Twitter  
and  
YouTube







## CANYON WORK UPDATE

It's been nearly five years since the Big Thompson River barreled down the Big Thompson Canyon, sweeping away homes, soil and large sections of U.S. 34, the road stretching between Estes Park and the valley below. The swift water also stole large portions of electric infrastructure as it barreled down the mountain.

In February, Loveland Water and Power (LWP) completed the first phase of the Big Thompson Canyon Rebuild Project, relocating and replacing infrastructure alongside the new and improved highway that spans 11 miles from Namaqua Road to the City of Loveland Water Treatment Plant (WTP).

The Big Thompson River begins in Rocky Mountain National Park as a trickle and rushes east down the canyon, toward the South Platte River near Greeley. In September 2013, rain fell nearly 8 inches in 48 hours as the river scoured the canyon.

Planning and design on Phase I of the Canyon Rebuild Project began in 2014. Power Contracting won the construction bid in January 2017. Since May 2017, crews set more than 500 new poles, 109 transformers and ran conductor over 34 miles.

"Phase I was challenging for a number of reasons including the amount of territory being rebuilt and the presence

of multiple voltages on the same pole line," said Frank Lindauer, Project Manager. "The path of our overhead line brought us into close proximity with many landowners and provided us the opportunity to work closely with our customers on certain aspects of the design and construction. Finding solutions to unexpected obstacles while trying to adhere to a tight construction schedule certainly kept our design and construction team on their toes. We're looking forward to the challenges of Phase II."

Phase II will continue to climb the canyon from the WTP, just west of the Colorado Cherry Company, including Sylvan Dale and up and over treacherous Ute Pass. Covering seven miles of tough terrain, crews will set an additional 40 transformers, 200 poles and run 17 miles of conductor.

Upon project completion of the second of three phases, 52% of Big Thompson Canyon customers will be served by completely new service. The speed of the second phase depends on the weather, but could wrap up at the end of September 2018.



## ARE UTILITY BILLS ZAPPING YOUR ENERGY?

Larimer County Conservation Corps partners with Fort Collins Utilities and Loveland Water and Power to offer free services and products to improve your home's efficiency and lower your utility bill. This limited-time offer is available from January through April.



LARIMER COUNTY  
**CONSERVATION  
CORPS**

200 West Oak Street, Suite 5000 • Fort Collins, CO 80521



**Efficiency Works™**



Sign up for a  home efficiency assessment today! visit [larimerworkforce.org/energy](http://larimerworkforce.org/energy)



**MAIN SWITCHBOARD**  
970-962-3000

**UTILITY BILLING**  
970-962-2111

visit us online...  
[cityofloveland.org/LWP](http://cityofloveland.org/LWP)



## Protect the SOURCE

## Drinking Water Week | May 6-12, 2018

We depend on our drinking water supply daily – But where does that water come from? Loveland Water and Power encourages you to get to know where your water comes from, so together, we can protect and preserve it. Protecting our water source now, ensures we have a sustainable drinking water supply for the future. To learn more about Loveland water sources we encourage you to get involved in Drinking Water Week by...

- ✓ Signing up for our e-newsletter and get updates about water projects, water tips, programs and more.  
[cityofloveland.org/AboutLWP](http://cityofloveland.org/AboutLWP)
- ✓ Check out the video *Where Loveland's Water Comes From* at [cityofloveland.org/LWP](http://cityofloveland.org/LWP)
- ✓ Follow LWP on Facebook, Twitter and Instagram
- ✓ Visit [DrinkTap.org](http://DrinkTap.org) to learn more about your water



*Lara R. 2017 – coloring contest winner*



## Water-Wise Your Home

Programs to Save Water & Money!

### GARDEN IN A BOX

Transform your landscape with a professionally designed Xeriscape garden!

### SLOW THE FLOW

Save water and keep your lawn healthy this summer with a free sprinkler inspection!

**LEARN MORE:** [ResourceCentral.org](http://ResourceCentral.org) or 303-999-3820

Brought to you by:



## 2018 FLUSHING SCHEDULE FIRE HYDRANT FLUSHING



Hydrant flushing helps keep the interior of the pipes clean, helps maintain excellent water quality, and ensures hydrants are operating properly.

Flushing can cause brief water discoloration. Although it is not recommended to use for laundry due to possible staining of clothes, the water is still drinkable.

*Flushing will start on the west side of Loveland and work eastward.*

**QUESTIONS?**  
970.962.3720

**APRIL 16-20**  
**NORTHWEST SECTION**

north of Hwy. 34 and west of Colorado Ave.

**APRIL 23-27**  
**SOUTHWEST SECTION**

south of Hwy. 34 and west of Colorado Ave.

**APRIL 30-MAY 4**  
**NORTH SECTION**

north of Hwy. 34 and east of Colorado Ave.

**MAY 7-11**  
**SOUTHEAST SECTION**

south of Hwy. 34 and east of Colorado Ave.

**MAY 14-18**  
**EAST SECTION**

Denver Ave. east to Centerra