



# Loveland ARTS Source

creativity & culture  
in the heart of  
northern colorado



Issue 2 • 2010 Loveland, Colorado  
Published by the Downtown Loveland Association





The new Embassy Suites Loveland Hotel, Spa & Conference Center combines 40,000 square feet of flexible function space with a beautiful setting at the gateway to Rocky Mountain National Park. With experienced meeting planners, full-service catering and high-tech audiovisual resources, you'll enjoy every convenience you'd get from a Denver conference center plus a whole lot more. Your guests will enjoy spacious two-room suites, a complimentary cooked-to-order breakfast, nightly Manager's Reception\*, restaurant, full-service spa and much more. Plus, they'll have access to hiking, biking, skiing, rafting and the other adventurous activities the Front Range is known for.

To start planning, visit  
[embassysuitesloveland.com](http://embassysuitesloveland.com)  
or call 970-612-2385.



EMBASSY SUITES®

Loveland - Hotel, Spa & Conference Center  
4705 Clydesdale Parkway, Loveland, CO 80538  
Tel: 970-593-6200  
Fax: 970-593-6202  
[embassysuitesloveland.com](http://embassysuitesloveland.com)

Another exceptional hotel by John Q. Hammons



\*Subject to state and local laws. Must be of legal drinking age. Hilton Honors® membership, earning of Points & Miles®, and redemption of points are subject to Hilton Honors Terms and Conditions. ©2010 Hilton Worldwide

**W**elcome to the 2nd edition of the LOVEland ARTSource. This publication is the result of the efforts of the Downtown Loveland Association (DLA) to highlight one of Loveland's most distinguishing features, its internationally renowned arts community. The DLA is proud to continue building on our inaugural edition in 2009, with pride and excitement in 2010. This is one of our many initiatives for the DLA 2009 – 2015 strategic plan. We all recognize Loveland's greatest asset being the arts, and fully want to support that aspect of this wonderful city. We also recognize that we need to continue to promote the arts, and this publication is the result of that need to market our arts.

The DLA is an all-volunteer, nonprofit grassroots organization whose mission is "To revitalize the Heart of Loveland." The reader may ask, "What does an arts guide have to do with revitalizing downtown?" The DLA is unanimous in its answer. "A lot!" Our downtown is the cultural hub of our community. Many galleries, art studios, the Rialto Theater, the Loveland Museum/Gallery and

numerous works of public art are found in the Downtown Loveland area. The arts are truly the distinguishing feature of Downtown Loveland and are a key piece to its continued vitality. While the DLA's focus is revitalizing Downtown Loveland, we recognize that downtown is only one part of what makes a great community and that is why our approach has always been to involve the whole city in this effort. The LOVEland ARTSource is a prime example of this whole-community approach. In these pages, you will find articles about the unique art experience found throughout the area. If you have never visited Loveland, or have just passed through, we hope that this publication will be a resource to encourage you to stay awhile and explore one of the best arts towns in the United States. The LOVEland ARTSource guides are distributed throughout the state at 10 of our Colorado visitors centers, to bring awareness to the many people who visit the region.

**Downtown  
Loveland  
Association**

*Revitalizing the Heart of Loveland*

The DLA would like to thank the many organizations and individuals who worked together and helped make this guide happen once again in 2010:

The Community Foundation of Northern Colorado, for their support of DLA and downtown, as well as the Loveland ARTSource. MaryJo Morgan, for her contribution of excellent stories about the arts in Loveland. Mary Bahu-Meyer and Channing Meyer of Full Circle Marketing & Design for their design, organization, content and editing of this publication. DLA board member and officer Jan Brown for her many hours in promoting and organizing the logistics and sales effort. The many advertisers and artists without whom the funding to make this guide a reality would not have been possible again this year. The DLA board members who sold the advertising to bring the LOVEland ARTSource to fruition. The many artists who call Loveland home. Without you, this project would not continue to succeed. We sincerely hope you enjoy our 2010 edition of the LOVEland ARTSource.

For more information about the Downtown Loveland Association or to become a member, please visit our website at [www.downtownloveland.org](http://www.downtownloveland.org).

## ACCOMPLISHMENTS

- Developed the most comprehensive marketing guide for the arts in Loveland, Loveland ArtSource
- Helped initiate Engaging Loveland, Inc and Association of Downtown Merchants (4th Street District)
- Worked with City of Loveland to improve signage for parking and create a parking map for downtown Loveland

## STRATEGIC PLAN INITIATIVES

- Promoting improved marketing of downtown Loveland
- Providing the driving force for development of a BID or DDA (Business Improvement District/ Downtown Development Authority)
- Promoting activities that provide DLA financing and fundraising to support the DLA mission
- Continuing to build on the success of Loveland ArtSource, the marketing guide to the arts in Loveland

JOIN US - [WWW.DOWNTOWNLOVELAND.ORG](http://WWW.DOWNTOWNLOVELAND.ORG)

LOVELAND ARTSOURCE





**ON THE COVER**  
**"Island Girl"**  
 Painting by Fran Judd,  
 Loveland artist



**"Hansel & Gretel"**  
 Loveland Opera  
 Theater  
 Photo by Coby Hughey



**"Figure with Vase"**  
 by Rene Hart, Loveland  
 artist and owner of  
 Hart Gallery & Studio



**"Turning Point"**  
 Bronze by Rosetta,  
 Loveland sculptor

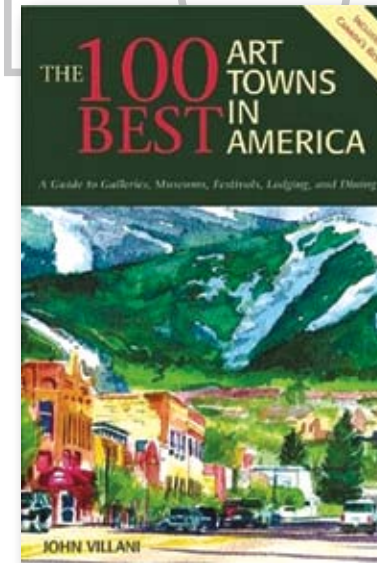


**"Floral Mandala II"**  
 by designata LLC/  
 Sharon Shuster  
 Anhorn, Loveland artist

# Loveland ARTSource

<b>Welcome</b>	<b>2</b>
<b>100 Best Art Towns In Colorado</b>	<b>4</b>
<b>If You Sculpt It, They Will Come</b>	<b>5</b>
<b>Schedules for Sculpture and Craft Shows</b>	<b>6</b>
<b>History Cast In Bronze</b>	<b>8</b>
<b>Art in Public Places</b>	<b>9</b>
<b>Chapungu - Stories In Stone</b>	<b>10</b>
<b>Studio Art Tour</b>	<b>11</b>
<b>Where To Go - Map Of Loveland</b>	<b>13-14</b>
<b>Creating A Legacy For A Visionary Community</b>	<b>15</b>
<b>Picture This</b>	<b>16</b>
<b>Events In Our Community</b>	<b>17</b>
<b>Plan For The Altitude</b>	<b>17</b>
<b>Loveland: A City With HeART</b>	<b>18</b>
<b>Colorado: State Of The Arts</b>	<b>19</b>
<b>Artspace</b>	<b>19</b>
<b>Feed &amp; Grain</b>	<b>20</b>
<b>Setting The Stage</b>	<b>21</b>
<b>LISA Program: Planting The Arts In Schools</b>	<b>22</b>
<b>Downtown Loveland - Art, Entertainment, Shopping, Dining</b>	<b>23</b>
<b>A Night On The Town</b>	<b>24</b>
<b>Advertisers Listings</b>	<b>25</b>

The Loveland ArtSource is published by the Downtown Loveland Association,  
 PO Box 7535, Loveland, CO 80537  
 Designed by Full Circle Marketing & Design, [www.fullcirclemarketing.net](http://www.fullcirclemarketing.net) | Printed by Light-Speed Color  
 This publication and contents are copyrighted by the Downtown Loveland Association ©2010.  
 All rights reserved. Reproduction or use of editorial or graphic content, in part or in whole, without express written permission is prohibited.



In 2005, John Villani published his fourth edition of "The 100 Best Art Towns in America" and named Loveland as number two, only behind Santa Fe. In the book, Villani cites our world-renowned sculpture shows, respected bronze foundries and unique public arts program as factors in his decision. As you'll see in the pages to follow, there are even more creative and cultural gifts Loveland has to offer, whether you're an artist, performer or empassioned art lover.

Sculpture may have put us on the map, but a visit to Loveland will

reward you with art galleries featuring all types of media, an arts-based public school curriculum, a restored historic performance theater, two distinctive sculpture gardens and much, much more.

No doubt Villani took all of these things into consideration during his selection process. But the sometimes invisible threads that truly create the tapestry of Loveland are its people: painters, sculptors, musicians, actors, artisans, crafters, writers, poets and especially those who so lovingly support the arts whichever way they can.

## ROSETTA STUDIO

405 8TH ST. S.E., #15, LOVELAND, CO 80537  
[www.rosettasculpture.com](http://www.rosettasculpture.com) 970-667-6265

## Sharon Shuster Anhorn designata LLC

"Zebras Dance"

Metal repousse', stained glass, painting  
 1303 No. Garfield Ave (Appt. only)  
 Loveland, CO 80537  
 • 970-278-1804 •  
[www.designata.net](http://www.designata.net)  
 Email: [designata@msn.com](mailto:designata@msn.com)



# If you sculpt it, they will come

An internationally renowned art event occurs in Loveland, Colorado each summer, on the second weekend in August. In the weeks leading up to the grand affair, giant figures can be seen making their way into town via large flatbed trucks. Eagles, stallions, buffalo and more make their way down the streets of Loveland on their way to participate in this special event.

Sculpture show weekend in Loveland consists of three art shows situated in and around Benson Sculpture Garden, located at 29th Street and Aspen Drive. Each show has a unique atmosphere, with something to please every visitor.

This summer, **Sculpture in the Park**, a prestigious, juried show, will be celebrating its 27th year. It started with fifty artists in 1984, and has grown to become the largest juried sculpture show in the country, generating over \$1

million in sales. The event features more than 170 artists from around the world and hosts thousands of visitors.

Sculptures of every size, shape and color are arranged beneath large white tents in the Benson Sculpture Garden, a park featuring over a hundred sculptures year-round. The proceeds from Sculpture in the Park fund additional sculpture purchases, improvements and landscaping of Benson Sculpture Garden, which plays an important part in the lives of locals and tourists alike. For several years, the park has been voted the “Best Place to Take a Visitor” in the Loveland Daily Reporter-Herald’s Readers Choice Awards.

This year, Sculpture in the Park runs August 7 and 8, Saturday 9:30 a.m. to 6 p.m., and Sunday 9:30 a.m. to 4:30 p.m. Admission is \$6, and children under 14 are free.



## Sculpture IN THE PARK

Over 170 Juried International Artists  
Bronze, Stone, Metal, Wood, Glass  
Modern, Traditional, Abstract

Saturday, August 7 • Sunday, August 8  
9:30 a.m. - 6:00 p.m.      9:30 a.m. - 4:30 p.m.

Benson Sculpture Garden • 29th & Aspen Dr. • Loveland, Colorado

For more information call (970) 663-2940  
or visit our website at: [www.sculptureinthepark.org](http://www.sculptureinthepark.org)



## 19 years Loveland Sculpture Invitational 2010 Show & Sale

**AUGUST 7 & 8**  
Saturday 9:30 – 6:00  
Sunday 9:30 – 4:30  
Admission \$5, under age 14 Free

Taft & 29th  
Loveland, Colorado  
970-663-7467  
[www.lovelandsculptureinvitational.org](http://www.lovelandsculptureinvitational.org)

THE LARGEST OUTDOOR SCULPTURE  
SHOW IN AMERICA... OVER 250 ARTISTS

# Schedules for Sculpture and Craft Shows

EVENT	LOCATION	DATE/TIME	COST
ART IN THE PARK	North Lake Park	Sat. 8/7 9:30 - 6:00 Sun. 8/8 9:30 - 4:30	Free
LOVELAND SCULPTURE INVITATIONAL	Loveland High School Grounds	Sat. 8/7 9:30 - 6:00 Sun. 8/8 9:30 - 4:30	\$5 Sat. & Sun. Children FREE
SCULPTURE IN THE PARK	Benson Park	Sat. 8/7 9:30 - 6:00 Sun. 8/8 9:30 - 4:30	\$6 Adults Children FREE

The **Loveland Sculpture Invitational** will be celebrating its 19th year as part of the city’s sculpture show weekend. The Invitational is located on the grounds of Loveland High School, 920 W. 29th Street, across the street from Sculpture in the Park, with over 200 artists displaying a variety of work in an assortment of mediums.

Along with thousands of works of sculpture, the Invitational features music and a food court. The show runs August 7 and 8, Saturday 9:30 a.m. to 6 p.m.,

and Sunday 9:30 a.m. to 4:30 p.m. Admission is \$5 on Saturday and Sunday. Children under 14 are free.

From serious art buyers to children, Loveland’s sculpture show weekend is fun for everyone. Free shuttle bus service to and from Benson Sculpture Garden area is available each day at several locations in town. For more information, visit [www.ci.loveland.co.us](http://www.ci.loveland.co.us) and click on Arts & Leisure.

Heidi Kerr-Schlaefel/Loveland

**Art in the Park**, Thompson Valley Art League’s Arts and Craft Festival is now in its 46th year. Starting with 13 vendors in 1964 at the old Canon Park, now Daniel Webster Park, the event has grown to over 200 artists each year.

A one-day event in its early days, it moved to the more spacious North Lake Park in the early 1990’s. For several years it boasted over 400 vendors in the Park. In 1996 the event was changed to a two-day show and scaled down to the present day configuration of 248 spaces available.

Artists from across the country have attended the show displaying various forms of artwork. At start up, the show



Photo courtesy Rick & Bonnie Stahlin

was 100% handmade art and craft items. Today, the event has a wide cross-section of mediums for the general public to view and purchase. Estimated attendance is 25 - 30,000 people for the weekend with no gate admission fees.

Paintings, craft items, clothing, jewelry, pottery, wood furniture, metal art, wall hangings, home décor, outdoor garden art, photography and more is available for the weekend. Wholesale distributors, retailers and gallery owners may find a specific product or artist they wish to represent from the event. It is a great source for advertising artwork and, of course, the public can always find a special piece for gift-giving or personal tastes.





**Nancy Abrahams**  
Photography  
970-667-4866  
<http://web.mac.com/scubanancy>  
Email: [scubanancy269@comcast.net](mailto:scubanancy269@comcast.net)

*I'm a nature photographer with an emphasis on undersea life*



**Carey Hosterman**  
Sculptor, jeweler  
546 SE 8th Street  
Loveland, CO 80537  
970-962-9637  
[www.RockyMountainBronzeShop.com](http://www.RockyMountainBronzeShop.com)  
Email: [rockymtnbronze07@comcast.net](mailto:rockymtnbronze07@comcast.net)

*I like my sculpture to reflect the joyful things in my life. I do commission work and design jewelry.*



**Monty Taylor**  
Bronze, stone  
Stone Lion Sculpture, LLC  
970-290-4615  
[www.stonelionsculpture.com](http://www.stonelionsculpture.com)  
Email: [montyamc@comcast.net](mailto:montyamc@comcast.net)

*Sculpture in bronze and stone, with a passion for telling the story for endangered creatures large and small.*



**Mark Thomas Ruby**  
Colorado Contemporary Jewelry  
SunSpirit Designs  
350 E. 7th St. #9, Loveland, 80537  
970-622-9500  
[www.sunspiritdesigns.com](http://www.sunspiritdesigns.com)  
Email: [sunspiritdesigns@yahoo.com](mailto:sunspiritdesigns@yahoo.com)

*Award-winning jewelry, unique designer gems, custom work, repairs. Fine metal crafts.*



Gigi Ostrowski

Receptions  
2nd Friday  
Each Month  
6-9pm



Patrick Zoller



Billie Colson



Del Hope

**Independence  
Gallery**

440 N. Lincoln Ave. (Downtown Loveland)  
970-669-0889

[www.fineartamerica.com/independencgallery](http://www.fineartamerica.com/independencgallery)

*Great gallery with a friendly atmosphere!*



**Rocky Mountain  
Bronze Shop**






Monument Race Horse  
by JUDY NORDQUIST  
for the Sultan of Oman

Bronze Finishing shop services include:

- Wax Pouring and Chasing
- Welding and Fabrication
- Metal Finishing
- Mold Making
- Bronze Casting
- Patinas

Bronze Delivery and Installation  
(above service open to all)

546 S.E. 8th St. Bldg. A#2  
Loveland, CO 80537  
(970) 962-9637  
[www.RockyMountainBronzeShop.com](http://www.RockyMountainBronzeShop.com)  
[rockymtnbronze07@comcast.net](mailto:rockymtnbronze07@comcast.net)

*Rocky Mountain Bronze Shop has been established in Loveland since 1994*

## History cast in bronze

Sculptures inspire, tell stories, memorialize the past, help us know where we are and enhance the beauty of the world around us. We've all seen sculptures in parks, museums, at historical monuments or in homes. When we admire a finished bronze sculpture, it looks perfect in every way. There is no evidence of the incredible process a sculpture must go through to become a lasting work of art.

Since the 1970s, Loveland, Colorado has been a mecca for artists, many of them sculptors. It has also been home to the industries that support sculpture. Some of the world's most recognizable sculptures have been cast in Loveland. Two of the best large foundries in the United States, Art Castings of Colorado and Bronze Services of Loveland (along with smaller companies that support the industry) are located in Loveland.

The practice of casting is ancient. The oldest surviving casting is thought to be a copper frog dating from 3200 B.C. Though the technique has evolved over the years, the same basic concept is used.

Once a sculptor has fashioned his or her piece in clay, wood, stone, plaster, etc., the work of turning a sculpture into bronze begins with a rubber mold. Each side of the sculpture is made into a mold and then the two sides are joined. Hot wax is poured into the cavity, and once the wax cools, the rubber is pulled away to reveal a "positive" image of the original sculpture.



Rob Harberts of Art Castings performs metal chasing on a sculpture in progress.

The step called "wax chasing" involves a craftsman with an artistic eye;

he or she must join the wax pieces together and sculpt the small details originally created by the sculptor that were lost in the molding process. Then the sculpture is equipped with sprues and gates: the channels through which the bronze can flow when it is poured.

The piece is then dipped into vats, dried and then dipped again, until a wall of ceramic shell is built up around the wax sculpture. The wax is then melted out and the cavity left inside the shell is the perfect negative of the original sculpture and it is ready for the bronze to be poured into it.

The hot liquid bronze is poured carefully into the cavity and then allowed to cool. Once cooled, the ceramic shell is chipped away to reveal the sculpture inside, but the process is far from over. The piece is sandblasted to remove any last bits of ceramic shell, and then, for a large sculpture, the individually cast pieces are welded back together to recreate the original vision of the artist.

After the piece is welded together, another artistic process begins. Called "metal chasing," it involves an accomplished craftsman using metal-working tools to restore the original detail to the sculpture, after which the sculpture then gets a patina, the chemical application of color. Highly skilled craftsmen apply the patina using a wide range of chemicals and application techniques. This is the last step before a bronze sculpture is mounted on a base and becomes a permanent piece of art to be enjoyed for generations.

Casting a bronze sculpture can take thousands of hours, and large sculptures often take years to complete. It also takes experienced, talented and dedicated craftspeople. To truly appreciate the process, take a tour of a Loveland foundry! Bronze Services and Art Castings, as well as other Loveland foundries, give fascinating tours of their facilities.

Art Castings of Colorado: 970-667-1114  
Bronze Services of Loveland: 970-667-2723

*Heidi Kerr-Schlaefel/Loveland*



## Art in Public Places

Loveland loves art; it is a long-term affair. Drive into town on any of the main arteries—larger than life sculptures stand in greeting. Numerous pieces dot the downtown business district, grace pocket parks and populate two generous sculpture gardens. Sculpture in the Park, inaugurated in 1983, reigns as the country's largest outdoor sculpture show. The City's \$7 million 300+ piece permanent sculpture collection continually grows, thanks to an Art in Public Places ordinance that designates one percent of the city's capital construction projects of \$50,000 or more for the purchase of art. The Loveland High Plains Art Council generously added "The Bell Keepers" by Bruce Papitto this year.

### Downtown Mural Project

Sheldon James created "Elemental Discovery" employing the optical illusionary trompe l'ouille technique, purposely breaking from traditional representation to get younger [high school] people interested. James explains, "I remember being that age and being impacted seeing people doing ambitious works – just the creativity of it."

Last fall, it was not unusual for a crowd to gather at 5th and Cleveland as James painted the north side of the McKee Building from scaffolding high above the sidewalk.



Transformer painting "Mavericks", Ross Lampshire



Mural, "Elemental Discovery," Sheldon James

### Transformations

An extremely successful 2009 Transformations Project transfigured 18 drab power transformer cabinets in 13 locations into innovative Art in Public Places. Susan Ison, Director of Cultural Services for the City of Loveland, is pleased the strong enthusiasm for the project has carried over to this year. An additional 20 Transformations will take place in 2010. Ison is also excited about proposals received for the Library and Chilson Recreation Center expansions. "We are getting really good proposals; some integrate art into the architecture."

### The Art Advocacy Project (TAAP)

The 2009 Art Advocacy Project (TAAP) placed seven sculptures in temporary downtown locations for one year. This exhibition was so well received, another begins immediately in May.

The Visual Arts Commission works with a selection panel to choose sculptures created by emerging or established Colorado artists. The project gives artists an opportunity to contribute to Loveland's Public Art on a temporary basis and draws people downtown to see the sculptures on exhibit. One 2009 exhibition piece, "Heron Rising" by Rosetta, has become part of the City's permanent collection.



Stone sculpture, "Poppy," Janet Sellers

MaryJo Morgan/Loveland

## Chapungu - Stories in Stone

Birds twitter from cottonwoods. Breezes gently shuffle dried leaves. Each step crunches on stone chips, left from past stone carving workshops. The 1.5 miles of walking and bike trails meanders through the tall trees and natural landscaping.

A tranquil 26-acre park rolls along the eastern edge of the Promenade Shops at Centerra. The irrigation swale-turned-park is an example of habitat enhancement and creation in the built award-winning environment. Jay Hardy, Vice President and General Manager of Centerra, says the company has made an extraordinary commitment to developing a peaceful cultural interaction.

Throughout the summer, free music concerts can be heard on Friday nights. African artists come to the park during the summer to teach sculpting workshops. (Groups of 10 or more receive a discount.) Every Saturday from May through October (weather permitting) from 11a.m.-12:15 p.m., Roy Guthrie, the director of Chapungu Sculpture Park and Gallery, gives free tours at the park. He shares inimitable stories of the artists and their rich Zimbabwean culture. The outdoor exhibit is home to 82 monumental sculptures

hewn by hand from solid Zimbabwean rock. In size and number, the park is presently the largest of its kind worldwide.

Stories in Stone – An African Perspective of Family is divided by topic into eight sections focused on Custom and Legend, The Role of Women, Spirit World, The Elders, Village Life, Nature and Environment, The Children, and The Family. Guthrie shares that when these sculptors approach a new block of hand-quarried stone, they have not already decided what they will carve. "They are open. A sculptor might say, 'I don't know yet [what it will be]. The stone will tell me.' After weeks of patient work, the piece emerges from the rock."

The park is also available to rent for weddings, receptions, corporate gatherings and fundraiser events. Centerra is located on the northeast corner of I-25 and Hwy. 34. Tours assemble on the east side of Biaggi's restaurant at 10:45 a.m. and private tours are available upon request. For more information, call 970-461-8020. See ChapunguSculpturePark.com or CenterraColorado.com online and visit in person for an unparalleled experience.

MaryJo Morgan/Loveland



Conveniently located in Loveland off Hwy. 34 & I-25, Chapungu Sculpture Park is home to 82 authentic stone sculptures hand carved by Zimbabwe artisans. The 26 acre natural and landscaped park is nestled just east of the Promenade Shops at Centerra, is open year round, and within walking distance to retail shopping and fine dining. A perfect setting to read a book, enjoy a picnic, take a school field trip or listen to a concert. Guided tours are scheduled on Saturdays from April through October, weather permitting. The park is available to rent for corporate gatherings, weddings and receptions, and non-profit events. Please call 970.613.4567 or visit [www.centerracolorado.com](http://www.centerracolorado.com) or [www.chapungusculpturepark.com](http://www.chapungusculpturepark.com) for more information.





### Gallery East

Center for the Arts / Since 1971  
229 E. 10th St.  
Loveland 80537  
970-667-6520  
www.galleryeast.com  
Email: info@galleryeast.com  
*Specializing in fine art: Paintings, Sculptures, Art glass, Jewelry and more, with art classes and special events.*



### Fred's Used Websites

Website hosting and design  
970-663-4184  
www.FredsUsedWebsites.com  
E: contact@Fred'sUsedWebsites.com  
*Powerful CMS, easy self-edit, e-Commerce & writing services. We create easy-to-update, seriously useful websites to enable site owners full use of this powerful marketing tool.*



### Friends of the Loveland Library

Artist's resources and much more.  
Loveland Public Library  
30 N. Adams, Loveland, CO 80537  
970-962-2665  
www.FriendsOfTheLovelandLibrary.org  
*Supporting the Library's service to the art community.*

## The Artist's Charitable Fund...

(artistscharitablefund.org) holds a live auction every year on the Saturday night of the Loveland Sculpture Show (sculptureinthepark.org) in the North Lake amphitheater, Taft & 29th. The fund exists to aid artists with medical expenses. This auction is the 501 (c)3 charitable organization's single annual fundraiser.

# Studio Art Tour

Join us as "We Save the Best for LAST!"

The Loveland Art Studio Tour (LAST) is a self-guided, two day event, held annually the third weekend in October, that promotes artists within the area and Loveland as an arts community. The tour gives you a chance to explore and enjoy splendid creations of the multi-talented artists. View everything from the traditional to contemporary, dramatic to whimsical, soul-lifting to laugh-evoking art.

All artists are welcome to participate, including those living outside the Loveland area, as long as the artists have their exhibition space located in Loveland.



Photograph, "Dancers Block," Reindeer

The many participating artists include Billie Colson, Mary Giacomini, George Coll, and Pat Saunders-White.

The tour is free to the public and allows for interaction with the artists, viewing of new work, works-in-progress, and demonstrations. All artwork is for sale throughout the weekend event.

The 2010 LAST event is scheduled for October 16-17 from 10 a.m.-5 p.m. each day.

For more information, visit [www.lovelandstudiotour.com](http://www.lovelandstudiotour.com).  
  
From 6:00 to 7:00 pm, there is an opportunity to take a close look at the auction pieces. The auction begins at 7:00 pm. Most are original works of art. Renowned sculptor George Lundeen, who serves the organization as President of the Board of Directors, brings fun and lively bargaining as the auctioneer. For more information, contact Judy Archibald 970-577-0509 or by e-mail at CNYNSPRT@aol.com.



### Dena Kirk

Fine Artist, Original Oils, Design  
Studio: 1209 Eastlake Court  
Loveland, CO 80537  
970-669-2105  
Email: dpkpaints@aol.com  
Website: [www.denakirk.com](http://www.denakirk.com)  
*Painting for me is not about duplicating reality; I redesign reality to evoke emotion using a purposeful visual approach.*



### Fran Judd

707 McKinley Avenue  
Loveland, CO 80537  
970-669-5737  
f\_judd@msn.com  
*The majority of my work represents the human figure. Since I paint from my imagination, every effort is an adventure into the unknown.*



### Lyse Dzija

*Specializing in Landscapes & All Portraits*  
• Oils  
• Pastels  
• Mixed Media

*Exciting new works include GIGANTIC Persian Miniatures on unique surfaces...*  
• Concrete  
• Bird Baths  
• Garden Gates  
• Wood Surfaces

504 E. 12th Street, Loveland CO (appt. only)  
[www.LyseDzija.com](http://www.LyseDzija.com) • 970.217.4180



### Travis Conrad Erion

Paintings & Drawings  
329 E. 3rd Street, Suite 406  
Loveland, CO 80537  
970-443-5003  
[www.travisconraderion.com](http://www.travisconraderion.com)  
Email: eriona@aol.com

"Perception" Oil on board



### Eugene Tanski

Photography, Wood Turning, Sculpture - metal, wood, stone  
Loveland, CO 80538  
970-962-6767  
[www.tanskiart.com](http://www.tanskiart.com)  
Email: [tanskiartstudio@gmail.com](mailto:tanskiartstudio@gmail.com)

"Father & Son" Photograph

Paintings can be seen at:

## Independence Gallery

440 N. Lincoln Ave Loveland  
Colorado 80337



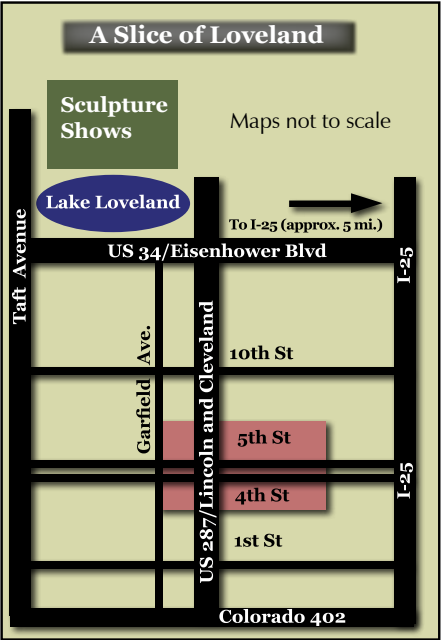
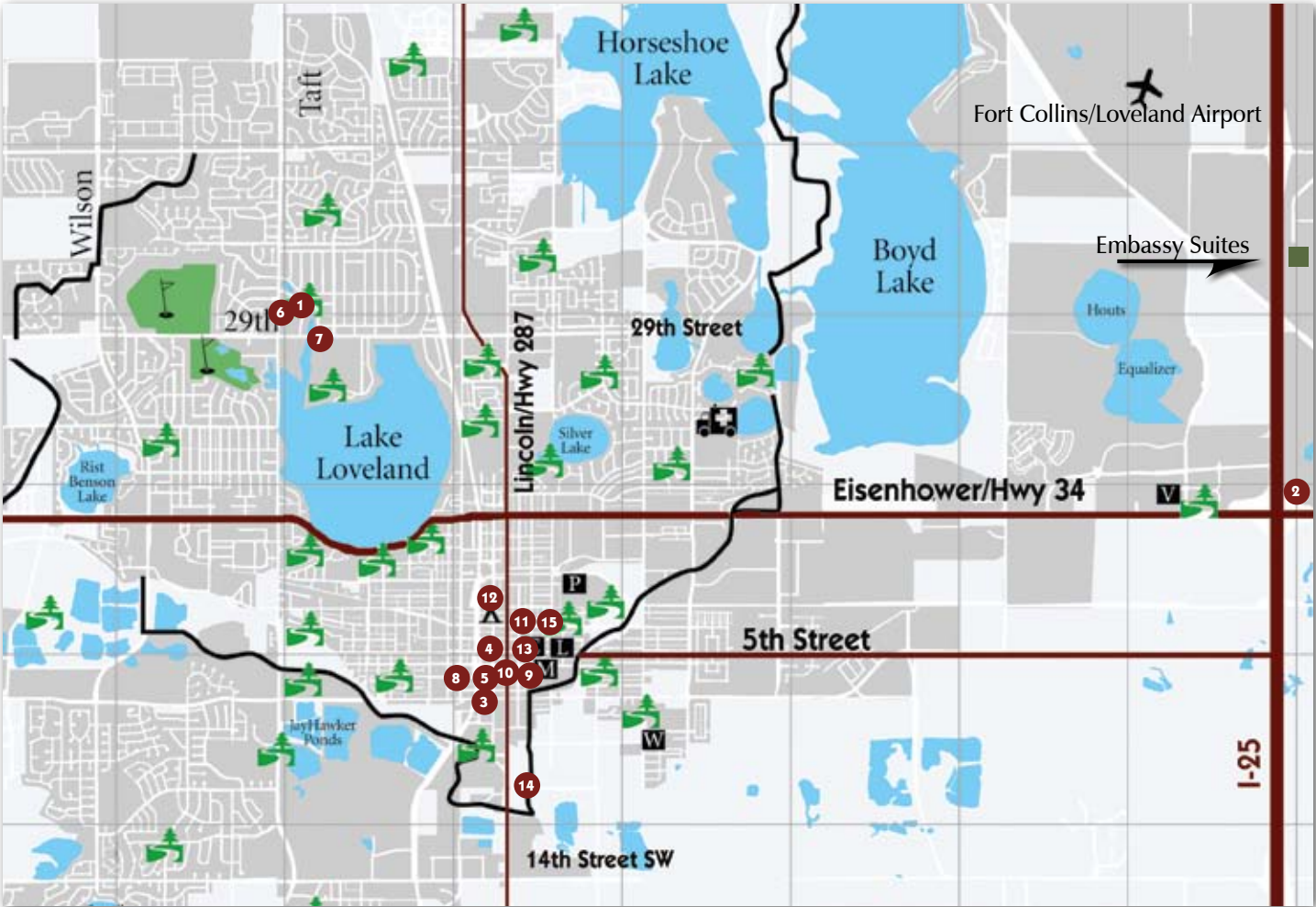
### Patrick Zoller Paintings

Zoller Fine Art Show Production, LLC  
**970-631-7518**

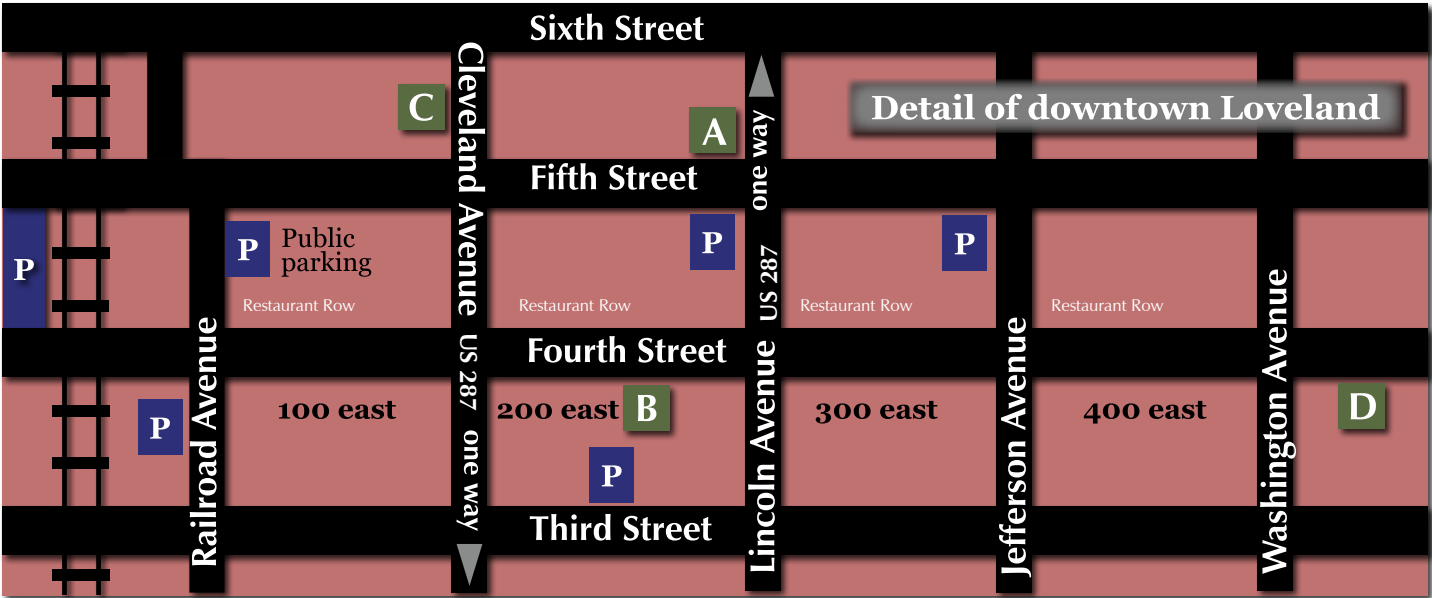


# Where to go

- |   |  |  |   |
|---|--|--|---|
| 1. Benson Sculpture Garden<br>29th St. & Aspen Dr.    | 5. The Rialto Theater<br>228 E. 4th St.                  | 9. Independence Gallery<br>440 N. Lincoln Ave.             | 13. Art of the Rockies<br>440 N. Lincoln Avenue |
| 2. Chapungu Sculpture Park<br>I-25 & Hwy. 34          | 6. Sculpture in the Park<br>29th St. & Aspen Dr.         | 10. Lincoln Gallery<br>429 N. Lincoln Ave.                 | 14. Rosetta<br>405 SE 8th St. Unit 15           |
| 3. Loveland Feed & Grain<br>Building<br>130 W 3rd St. | 7. Loveland Sculpture<br>Invitational<br>29th St. & Taft | 11. The Master's Fine Art of<br>Loveland<br>343 E. 7th St. | 15. SunSpirit Designs<br>350 E. 7th St.         |
| 4. Loveland Museum/Gallery<br>503 N. Lincoln Ave.     | 8. Hart Gallery & Studio<br>135 E. 4th Street            | 12. Gallery East<br>229 E. 10th St.                        |   |



- Landmarks**
- |                                  |   |
|----------------------------------|---|
| <b>A</b> Loveland Museum/Gallery | <b>D</b> Civic Center Park<br>Loveland Public Library<br>Foote Lagoon<br>Chilson Recreation Center<br>Loveland Municipal Bldgs. |
| <b>B</b> Rialto Theater          |   |
| <b>C</b> Pulliam Building        |   |



TRANSPORTER LLC  
**ENJOY THE RIDE**

Let us do the driving!

**DIA trips, Art Tours, Night on the Town**

Six people ride for the cost of one

Pricing comparable to or less than a taxi

**15 + 2**

Our quote to you

By the mile, not the meter

**24/7 - 365**

**NoCo's Reliable Transportation**

[www.TransporterLLC.com](http://www.TransporterLLC.com)

**970.556.8227**



# Creating a Legacy for a Visionary Community

**Community Foundation of Northern Colorado**  
Shaping the future of our region through strategic support and leadership, the Community Foundation of Northern Colorado impacts our region by distributing millions of dollars each year to charitable organizations. The Community Foundation is the regional leader in building a more engaged, philanthropic and visionary community, and connects people to local causes to inspire giving and community involvement.

Established in 1975, its first project was to manage charitable donations during construction of the Lincoln Center, now a renowned theater showcasing the arts in Fort Collins. Thirty-five years later, the Community Foundation is exploring ways



## Our Vision

To be the regional leader in building a more engaged, philanthropic and visionary community

## Our Mission

To provide a trusted, local platform that enables people to give more effectively and to think strategically and creatively about the future of our community

## Our Priorities

- **Philanthropic Resources:** Providing education, expertise and incentives to build permanent endowments that will strengthen and sustain Northern Colorado
- **Regionalism:** Serving as a unifying force in Northern Colorado by promoting regional cooperation
- **Sustainability:** Providing a forum for productive discussions that will help balance regional concerns about growth, the environment and economic vitality

4745 Wheaton Drive, Suite 100 • Fort Collins, CO 80525 • (970) 224-3462  
info@CommunityFoundationNC.org • www.CommunityFoundationNC.org

to provide leadership and funding for promoting the arts in Loveland and revitalizing the historic downtown. The “Rialto Bridge” theater expansion (see bottom of p. 16), the Pulliam Building remodel, and the ArtSpace Survey are examples of projects through which the Community Foundation connects with donors who wish to establish a charitable legacy.

The Community Foundation makes long-term philanthropic thinking easy for donors through the creation of custom-designed permanent endowment funds. It serves as a vehicle for charitable giving, not the end-user of charitable donations. Local leaders — serving on community fund committees in Loveland, Berthoud, Estes Valley and Fort Collins — oversee the grant-making decisions for unrestricted funds that affect their respective towns.

Bringing people together to create a greater impact through initiatives, forums and educational events is another goal of the Community Foundation. It brought former congressman and four-term Indianapolis mayor Bill Hudnut to Loveland as a speaker twice in 2009. Hudnut gave impassioned speeches about the importance of a vital downtown and the arts to the local community and economy. He stimulated many conversations afterwards, discussions that are ongoing among Loveland citizens, City Council members, non-profits and business owners.

Consider establishing your own legacy through a donor-advised fund to support the arts and other non-profits within your area of philanthropic interest. For more information:

- [www.CommunityFoundationNC.org](http://www.CommunityFoundationNC.org)
- (970) 224-3462
- [info@communityfoundationnc.org](mailto:info@communityfoundationnc.org).

# Picture This

## Photographic arts abundant in Loveland

The abundance of breath-taking landscapes, majestic mountain panoramas, nearby wildlife, surreal skies and incredible light quality make for fantastic photographic art opportunities in and around Loveland. These area attributes are magnets for photographic artists who create in a wide range of artistic styles. The growing photography interest is especially evident with the Loveland Photographic Society, now with over 250 members. The Society helps expand the culture for photo-artists and those who are learning, through judged photo competitions, mentoring, and regular programs by accomplished photographers from the area and who visit this growing arts center.

The spectrum of subjects and styles hardly stops with the local outdoors, as Loveland photographers are well represented in fine arts images and black & white studies. Local gallery

exhibits include traditional film and digital images plus the creative artistry of images produced with artistic skills in enhanced digital imaging.

There are private galleries that exclusively exhibit photography and many other galleries that mix high quality photography with other arts offerings. Periodic exhibits at Loveland Museum/Gallery, Loveland Visitors Center and Loveland Public Library of photographic works are popular. In addition, compelling photographic images can be enjoyed in many Loveland restaurants, coffee shops and other retail businesses. Without a doubt, Loveland is really a photography showcase!

Variety in exhibited works in traditional prints, giclee prints, canvas gallery wraps, greeting cards, photo books



Loveland Photographic Society

and digital display images are making offerings of photo-art more interesting all the time. Loveland photographers are on the leading edge in employing new technology and methods to create compelling photographic art.

For those who find fascination in interesting photographic images, a stroll through Loveland's galleries and other public displays of photographic art is a rewarding experience.

*Don Reilly, Loveland Photographic Society*

Proposed Rialto Bridge Project, RB+B Architects





MAY

vents in our community

- 8.....11th Annual Silver Spoon Film Festival at the Rialto
- 14.....Night on the Town, Downtown Loveland
- 22.....Paws on the Promenade, Promenade Shops at Centerra

JUNE

- 4-6.....Good Guys Car Show, The Ranch
- 11.....Night on the Town, Downtown Loveland
- 17, 24.....Foote Lagoon Concerts, Downtown Loveland
- 26.....Loveland Garden Tour, Lake Loveland

JULY

- 1, 8, 15, 22 & 29.....Foote Lagoon Concerts
- 4.....July 4th Fireworks at North Lake Park
- 9.....Night on the Town, Downtown Loveland
- 9-10.....Loveland Loves Barbecue, 5th & Cleveland/Downtown
- 9-11.....SummerFest in the Rockies, Civic Center Park/Downtown
- 16, 23, 30.....Sounds of Centerra, Chapungu Sculpture Park
- 21.....Teen Battle of the Bands, North Lake Park, Hammond Amphitheater
- 24.....Cherry Pie Festival, Peters Park

AUG

- 6, 13, 20.....Sounds of Centerra Concerts, Chapungu Sculpture Park
- 6-10.....Larimer County Fair & Rodeo, The Ranch
- 7-8.....Sculpture Shows & Art in the Park Weekend, 29th St and Taft
- 13.....Night on the Town, Downtown Loveland
- 27-28.....Old-Fashioned Corn Roast Festival, Fairgrounds Park
- 27-29.....Sweetheart Balloon Rally, Fairgrounds Park

SEPT

- 4-7.....Thunder in the Rockies, The Ranch
- 10.....WineDown the Summer at Centerra, Chapungu Sculpture Park
- 10.....Night on the Town, Downtown Loveland

OCT

- 8.....Night on the Town, Downtown Loveland
- 16-17.....Loveland Art Studio Tour, Loveland
- 30.....Halloween Hullabaloo, Marketplace at Centerra
- 30.....Halloween Family Fun Fest, Downtown Loveland

NOV

- 6.....McKee Presents: A Loveland Celebration
- 12.....Night on the Town, Downtown Loveland
- 28.....Holiday Tree Lighting, Downtown Loveland

DEC

- 12.....Night on the Town, Downtown Loveland
- Check websites listed below for more up-to-date information on December events

FOR COMPLETE DETAILS OF EVENTS IN LOVELAND VISIT:  
engaginglovelandinc.org | downtownloveland.org  
loveland.org

D

lan for the Altitude

Loveland, Colorado’s elevation is 4,982 ft. Many people who visit Loveland also take the time to travel to nearby Estes Park and Rocky Mountain National Park. The elevation there is significantly higher at 7,522 ft. A popular thrill is Trail Ridge Road which climbs to 12,183 feet, crossing the Continental Divide.

People sometimes get “mountain sickness” or “high-altitude sickness” due to lack of oxygen at higher altitudes. As altitude increases, the air becomes “thinner,” which means less oxygen is in the atmosphere. Less oxygen in the lungs with each breath causes the amount of oxygen in the blood to decline. Effects are generally noticed at altitudes of 7,000 to 8,000 feet. Folks who have heart or lung problems may have symptoms at lower altitudes or experience more severe symptoms.

The higher the altitude, the greater the effects can be. Symptoms usually begin within 48 hours and may include headaches, breathlessness, fatigue, nausea or vomiting, sleeplessness and swelling of the face, hands and feet. Most people adjust to the high altitude within a few days.

- TIPS:
- Avoid strenuous activity for the first day or two.
  - Be careful of alcohol consumption as its effect is magnified at high altitude.
  - Drink extra fluids, especially lots of water.
  - Bring sunglasses, sunscreen, lip balm... even in winter. There is 25% less protection from the sun’s rays at higher elevation. Colorado receives over 300 days of sunshine annually!



SHEL performing at SummerFest in the Rockies

L

oveland: A City with HeART

Loveland, Colorado, is known in many circles nationally and internationally as an arts community and sculpture mecca. For many years, Loveland has enjoyed a reputation as “The City of Love” through the Valentine Re-mailing Program and using the symbol of a heart.

Delighting visitors during February, traditional heart-shaped signs can be seen all over town, featuring initials of people in love for funny or romantic Valentine’s sentiments. This is a popular fundraising project of Rotary in Loveland, who charge for the hearts and use the donations for charitable causes.

Now there is another opportunity for Loveland residents and visitors to enjoy hearts in a community-wide art celebration called the “Loveland: A City with HeART” project. The project was created by Engaging Loveland, Inc., a non-profit organization that develops and supports community-wide events and enhances tourism. Monumental hearts are painted and designed by local Loveland artists, then businesses and individuals select a heart design to sponsor.

Currently, there are 18 hearts strategically placed throughout the City of Loveland. More hearts are expected to be displayed throughout the community in 2010. People use printed maps to drive around and find the hearts all over Loveland, which helps them to see our city.

As the project continues to mature, more hearts will pop up throughout the City that is known for ART. The goal of this project is to “share the love” and encourage people of all ages and backgrounds – from the area and around the world – to have fun with us as we reconnect with and reinvent the heart.

See the hearts online at [www.new.engagingloveland.org/events/a-city-with-heart](http://www.new.engagingloveland.org/events/a-city-with-heart).

Kim Vecchio, Engaging Loveland, Inc.



“Connections of the Heart,” Kirsten Bolton & Danielle Roskamp - Loveland Photographic Society

# What’s Going On?

Sweet heart balloon rally

LOVELAND

art DINING

Summer Fest IN THE ROCKIES

Can

VISIT OUR WEBSITE FOR ALL EVENTS IN LOVELAND.

engagingloveland  
MAKING OUR COMMUNITY A BETTER PLACE

[www.engaginglovelandinc.org](http://www.engaginglovelandinc.org)



## Colorado: State of the Arts

**The Nineteenth Annual 2010 Governor's Invitational Art Show & Sale** was held Saturday April 24th, beginning with an oil painting demonstration in the afternoon by Anita Mosher of an 11x14 oil she titled "Red Rooster."

The opening night reception and auction was well-attended and full of light-hearted competition, with prospective buyers racing from one exhibit to another, placing intent-to-purchase slips into the drawings. Each round, a slip drawn at each piece gives someone the opportunity to purchase it. When hopefuls win chances to buy multiple pieces, hard decisions must be made. Sales topped last year by \$10,000. Proceeds fund artistic and academic scholarships for young people interested in pursuing the arts.

This year's magnificent raffle prizes were oil landscapes by James Bigger and Pem Dunn and a bronze sculpture, "The Hunt," by Rosetta.

Governor Bill Ritter exclaimed, "This show exhibits the best Colorado has to offer in artistic excellence. Our state is proud of the creativity and beauty they give us."

Each year, more than a dozen new Colorado artists are invited to participate in the juried show. This refreshing of



Oil painting, "Cloaked in Wisteria", Martin Lambuth

variety, subject matter and style nourishes the event. The 2010 show continues until May 30th at the Loveland Museum/Gallery. Next year the Opening Night Gala and Sale date is April 23, 2011 and will run through June 6th. For more information, go to [governorsartshow.org](http://governorsartshow.org).

*MaryJo Morgan/Loveland*

## Artspace

Artspace is the nation's leading real estate developer for the arts. There is a possibility that Artspace will create, foster, and preserve affordable live/work space for artists here in Loveland. A survey conducted in February 2010 substantiated Loveland's commitment to the arts. Although repurposing the Feed & Grain was the initial idea, other locations may be considered if Loveland is selected.

An Artspace project could be the catalyst for significant economic development in Loveland. Artspace assembles financial resources from a variety of public and private sources and each project is fully funded before any work begins. This progressive organization also looks for sustainable options to minimize environmental impact and reduce energy consumption.

Some past projects include The Harvester Artspace Lofts in Council Bluffs, Iowa, Everett Station Lofts in Portland Oregon, and Artspace Tannery Lofts in Santa Cruz, California.

Artspace conducts 20 to 25 feasibility studies each year, and only a few of these lead to projects. Community involvement and the ability to follow through affects the selection decision. An announcement of their decision regarding Loveland is expected in June 2010.

For more information, go to [www.artspace.org](http://www.artspace.org).



Photography by Don Reilly. Photo editing Full Circle Marketing & Design

## Feed & Grain

The Loveland Feed & Grain, Loveland's most photographed building, barely escaped demolition in 2006. Ever since then, the non-profit group Novo Restoration, Inc. has worked to preserve the historic integrity of this building and maintain public access and community use. Artspace, real estate developer for the arts, is considering Loveland for affordable housing/studio space, possibly for repurposing of the Loveland Feed & Grain. To measure the feasibility of this project, Novo partnered with area supporters to send out a survey.

The Erion Foundation, the Community Foundation of Northern Colorado, Mueller & Associates, CPA and the City of Loveland participated in distributing the on-line survey to the community.

Novo has facilitated the F&G's stabilization and repurposing through partnerships with the State Historical Fund, the Historic Preservation Commission, Loveland Historical Society, and United Way of Larimer County. Novo Restoration's Facebook Fan Page keeps updates and happenings buzzing in social media circles. For news and events, visit [www.LovelandFeedAndGrain.org](http://www.LovelandFeedAndGrain.org).

*MaryJo Morgan/Loveland*

**THERE'S NEVER BEEN  
A MORE EXCITING  
TIME TO BE AN  
ARTIST IN LOVELAND.**

Visit [LovelandFeedAndGrain.org](http://LovelandFeedAndGrain.org) to see how Novo Restoration is working to support the arts in Loveland

**"It [Artspace] would be an exciting thing for everybody, enhancing the community through the [art] movement and taking it to the next level as an economic driver."**

**Marty Janssen, Board President  
Novo Restoration, Inc.**



Feed & Grain Building. Photo courtesy of Sharon Anhorn  
Photo editing Full Circle Marketing & Design



## etting the Stage

### The Performing Arts in Loveland

Theater is alive and well in Loveland, from opera to children's theater to nationally touring performers. Performances of music also abound around town. Locals and visitors alike enjoy the popular free music series outdoors at the Foote Lagoon and the variety of musical acts at the annual SummerFest in the Rockies. For a monthly listing of performances and events, see page 17.

**THE RIALTO THEATER**, on downtown's Fourth Street, is often called "the gem in the heart of Loveland." Built in 1920, the Art Nouveau-style theater was reopened as a community performing arts center in 1996, after many years of fundraising and volunteer labor. The historic Rialto Theater is a thriving, 446 seat performing arts center that hosts nationally touring performers, local bands, children's theater, choral groups, classic and independent films and other community events. Location: 228 East 4th Street. Parking: side streets and in public lots, west of Cleveland Ave between 5th - 6th Streets and directly behind the theater. Website: [www.ci.loveland.co.us](http://www.ci.loveland.co.us), then click on Rialto. Box office hours: 12:30 p.m. to 5:30 p.m. Tuesdays through Fridays, and 10:00 a.m. to 1:00 p.m. on Saturdays. Phone: (970) 962-2120.

**THE ACTING COMPANY IN LOVELAND**, founded in 1978 as Loveland Community Theatre, Inc., has been producing shows in Loveland continuously since then. This annually renewed, fully involved company of actors and designers



"Hansel & Gretel" Loveland Opera Theater  
Photo by Coby Hughey

works under the guidance of an Artistic Director to share in the production of a full season of high quality shows for the Loveland community. The performance home for this not-for-profit, 501 c(3) charitable organization is the historic Rialto Theater. All seating is reserved.

Website: [www.peakpeak.com/~jbbrown/TAC](http://www.peakpeak.com/~jbbrown/TAC)

**LOVELAND OPERA THEATER** is a charitable, tax-exempt organization that provides performance and educational opportunities for emerging and seasoned artists that enhance the cultural experiences of the local community. This 501c3 not-for-profit opera company was founded in 2004 by Dr. Bishop Hoch, the Executive and Artistic Director of Loveland Opera Theatre. She maintains a private voice studio in Loveland and has produced all of LOT's operas, galas and special events. Performances at the Rialto Theater and private homes. Phone: (970) 593-0085. E-mail: [lovelandoperatheatre@gmail.com](mailto:lovelandoperatheatre@gmail.com).

**THE LOVELAND PERFORMING ARTS ASSOCIATION** brings outstanding performances from around the world to the Loveland community. The LPAA was originally formed in 1975 as the Loveland Civic Music Association Guild. The non-profit LPAA and volunteer staff bring premier performances of classical and pop concerts to Loveland at reasonable prices. From opera to instrumental music to big band, their annual series includes a wide variety of entertainment to appeal to a broad audience. All performances at Roberta Price Auditorium, Thompson Valley High School, 1669 Eagle Drive. Phone: (970) 663-9420. Website: [www.lovelandpaa.org](http://www.lovelandpaa.org).

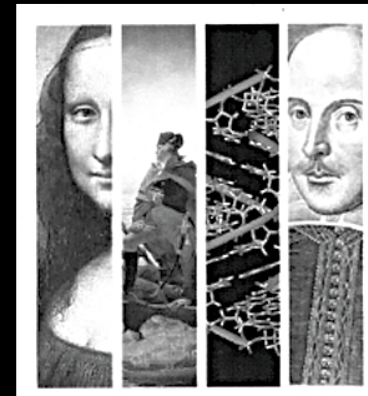
**THE LOVELAND CHORAL SOCIETY** is recognized as a versatile choral and performance ensemble in Northern Colorado. They present an exciting array of music in a style that is approachable, entertaining and unforgettable. Whether performing the classics, Broadway tunes, pop favorites or rock-'n'-roll hits, LCS consistently delivers the absolute best in musical entertainment. In its twentieth season under the artistic direction of Clifford Schultz, LCS garners considerable acclaim and appreciation for its strong contribution to the performing arts community. LCS performs at the historic Rialto Theater. E-mail: [info@lovelandchoralsociety.org](mailto:info@lovelandchoralsociety.org).

## ISA Program: Planting the Arts in Schools

The value of a community that nourishes its artists, musicians and thespians is undeniable, but Loveland has an educational program that believes in starting while the seeds are still in the earth. In 2007, the Thompson School District launched the Loveland Area Integrated School of the Arts program (LISA) in order to provide an educational option for students with a passion for the arts. The curriculum is specifically designed to integrate the arts — visual as well as performance — into all subjects and offer alternatives to traditional learning styles.

The program is currently offered at Garfield Elementary, Bill Reed Middle School and Mountain View High School. Early successes include an opera based on the book "Where the Wild Things Are," "Miss Saigon," as well as student photography workshops and exhibits.

While it's still too early to see CSAP results, program director Dave Steward says the data on attendance and



grade point average already demonstrates an increase in student interest. "They want to be there," he says, adding "unless a student is engaged, learning isn't going to happen at a very high level."

The district has partnered with the University of Northern Colorado for developmental support. The college has a whole

section of their art department dedicated to the integration of the arts in education. Working with professional artists and businesses in the area is also key to this project.

For more information on LISA and supporting the arts in education, contact Thompson School District at (970) 613-5000 or visit [www.thompson.k12.co.us](http://www.thompson.k12.co.us).



LCS PRESENTS ITS  
2010-2011 SEASON

**THE MAGNIFICENT SEVEN RIDE AGAIN**  
October 8-10, 2010

**CHRISTMAS TIDINGS**  
December 10-12, 2010

**The Tunetastic Time Machine**  
April 22-May 1, 2011

[www.LovelandChoralSociety.org](http://www.LovelandChoralSociety.org)  
Rialto Theater 228 E. 4th Street, Loveland, CO 970.962.2120



### Loveland Opera Theatre

970-593-0085  
[info@lovelandopera.org](mailto:info@lovelandopera.org)  
[www.lovelandopera.org](http://www.lovelandopera.org)  
The opera company with a HEART! Performances

throughout the year at the Rialto Theatre and in private homes in Northern Colorado.



### Lorân Strings

Classical Music for Special Events  
Victoria Lorân - Violinist  
970-493-6714  
[www.loranstrings.com](http://www.loranstrings.com)

Providing exceptional music service to Northern Colorado since 1993.  
Professional-Experienced-Dependable



## Downtown Loveland - Art, Shopping, Dining

(see page 14 for map)



**Unique & Unusual Gifts**

- gifts galore
- home decor
- sterling silver jewelry
- journals n cards
- women's accessories
- and more...

**ALMOSTA MERCANTILE**

...like no other

Mon.-Fri. 10-6 • Sat. 10-5 • Sun. 12-4

343 E. 4th Street, Loveland, CO

970.663.2626



**Baja Fish Co.**  
119 East 4th Street  
Loveland, CO 80537-5501  
(970) 292-8077  
bajafishco.com  
Seafood and Mexican  
Restaurant with daily specials  
and fresh fish selections.



**Full Circle**  
MARKETING & DESIGN  
**Designer of the 2010 Loveland ARTSource**  
www.fullcirclemarketing.net | 970-962-9203  
Design and marketing magic for Print and Web



**Rene Hart**  
Paintings & Sculpture  
Hart Gallery & Studio  
135 E. 4th Street  
Loveland, CO 80537  
970-667-0214  
Email: renehart3@q.com  
*Rene's style of painting and sculpting is a blend of Impressionism and Realism. Her work is coveted by numerous collectors.*



**Art of the Rockies**  
Gallery & Custom Framing  
440 N. Lincoln Avenue  
Loveland, CO 80537  
970-669-5111  
www.artoftherockies.com  
A Thomas Kincade  
*Showcase Gallery. Custom framing including shadow boxes. Open and limited edition prints by nationally known artists.*



**Kitchen Alley**  
Gadgets, pots & pans, cutlery  
and more  
121 E. 4th Street  
Loveland, CO 80537  
970-593-0130  
Email: kitchenalley@yahoo.com  
*Kitchen Alley is not only your best source for kitchen items in Loveland, but a showcase for local artists like Pat Saunders-White and Pati Pelz as well.*

## A Night on the Town

Community art walks have become a popular event around the country in recent years, and in 2005 Loveland decided to strap on its strolling shoes as well. Spearheaded by local artist Billie Colson, "A Night on the Town" debuted that May with 15 businesses participating. Colson chose the second Friday of each month to encourage locals to eat, shop and enjoy art in historic downtown.

Five years later, there are over 30 participating galleries, merchants and restaurants and the year-round event draws hundreds of visitors to the area. It's been likened to a big block party downtown where people can enjoy the ambiance and proceed at their own pace through



businesses that stay open from 6 p.m. until 9 p.m.

Many of them offer refreshments, specials or featured artists to set the night apart. During warm months you can enjoy live music and entertainment at the corner of Fourth and Lincoln or at the Loveland Museum/Gallery. Stylish banners indicate the participating locations and maps with participating merchants and upcoming events can be found throughout town.

This family-friendly evening has not only enhanced the appeal of Loveland's historic district but added another layer to the city's reputation as a venerable arts community. For more information about "A Night on the Town," call Billie Colson at 970-669-0889.

TRANSPORTER LLC

# ENJOY THE RIDE

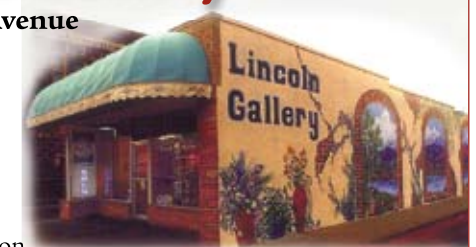
**Art Tours, Night on the Town, Ladies Night Out, Bar Trek®, Special Events**  
**6 people for the cost of 1**  
**Comparable to the price of a taxi**  
**Luxury transportation**  
**15 + 2**  
**Our quote to you**  
**By the mile, not the meter**  
**24/7 - 365**

**NoCo's Reliable Transportation**  
**www.TransporterLLC.com 970.556.8227**



## Lincoln Gallery

429 N. Lincoln Avenue  
Loveland  
970.663.2407



**T**hompson Valley Art League is a non-profit organization which owns and operates Lincoln Gallery for local member artists. Monthly display changes offer original artworks: pottery, paintings, photography, three dimensional works, jewelry and prints.

The Art League sponsors the Annual "Art in the Park" Arts and Craft Festival each August in North Lake Park, participates in the "Night on the Town" providing working artists each 2nd Friday from 6 to 9 pm, fundraising book fairs at Barnes & Noble bookstore (Feb., July, Dec.), membership art shows and other activities supporting Downtown and the Loveland community.

Email: lincolngallery@qwestoffice.net, Website: www.lincolngallery.com  
Business hours: Monday - Friday 11 am to 5 pm, Saturday 11 am to 4 pm



*The Downtown Loveland Association extends its appreciation to all those who made this publication possible.*

Almosta Mercantile 23	Kitchen Alley 23
Art of the Rockies 23	Lincoln Gallery 24
Baja Fish Co. 23	Linda King 26
Carey Hosterman 7	Lorân Strings 22
Chapungu/Centerra 10	Loveland Choral Society 22
Christine Knapp 26	Loveland Opera Theatre 22
City of Loveland 27	Loveland Sculpture Invitational 5
Community Foundation of Northern Colorado 15	Lyse Dzija Studio 12
Dena Kirk 12	Mark Thomas Ruby 7
designata, llc/Sharon Shuster Anhorn 4	Master's Fine Art of Loveland 26
Donna Pelton 26	Nancy Abrahams
Embassy Suite 1	Nancy Abrahams 7
Engaging Loveland 18	Novo Restoration, Inc. 20
Erion Studio Gallery 12	Patrick Zoller 12
Eugene Tanski 12	Rene Hart 23
Fran Judd 12	Rocky Mountain Bronze Shop 7
Fred's Used Websites 11	Rosetta Sculpture 4
Friends of the Loveland Library 11	Sculpture in the Park 5
Gallery East 11	Stone Lion Sculpture, LLC 7
Independence Gallery 7	Sun Spirit Designs 7
Jan Rowen 26	Transporter LLC 14, 24



### Jan Rowen

Raku Potter & Clay Artist  
343 East 7th Street  
Loveland, CO 80537  
970-667-4138  
www.themastersfineart.com  
E-mail: jan@themastersfineart.com

*From jars & vases to amazing wall pieces, Jan's creativity with clay and her affordable prices put her one-of-a-kind pieces in high demand!*



### Donna Pelton

Bronze Sculptures  
343 East 7th Street  
Loveland, CO 80537  
970-667-4138  
www.themastersfineart.com  
Email: donna@themastersfineart.com

*Donna's love of animals is captured in her bronzes. "I feel so blessed to be able to create something that brings joy to others."*



### Linda King

Inspirational Photography & DVDs  
343 East 7th Street  
Loveland, Colorado 80537  
(970) 667-4138  
www.themastersfineart.com  
Represented by The Master's Fine Art of Loveland

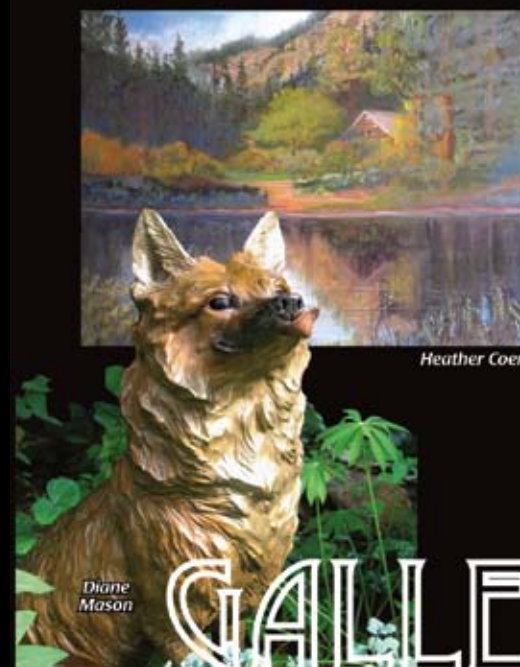
Email: linda@themastersfineart.com  
*May the work of my hands become tools in your hands for the Savior!*



### Christine Knapp

Breathing Life into Bronze  
www.christineknappsculpture.com  
303-823-5457  
www.themastersfineart.com  
Represented by The Master's Fine Art of Loveland

*I love watching a patron smile or caress one of my creations. How wonderful to bring joy to others!*



**The Master's**  
Fine Art of Loveland®

343 East 7th - Loveland, CO  
(970) 667-4138  
www.themastersfineart.com

Award-Winning Artists

Sculpture  
Paintings  
Pottery  
Photography  
Gift Shop



GALLERY & GARDEN



# Loveland

Winner of the 2008 Governor's Arts Award

## A Work of Art

Promoting and enriching the quality of life through diverse cultural experiences in history, all forms of artistic expression and in community celebration.



**Rialto**  
THEATER

228 E. 4th St.  
Loveland, CO 80537

(970) 962-2120  
Box Office Hours:  
Tues–Fri 12:30–5:30 pm  
Sat 10-1

ART IN  
PUBLIC  
PLACES

*Loveland*



**LOVELAND**  
**MUSEUM**  
**GALLERY**

503 N. Lincoln Ave.  
Loveland, CO 80537

(970) 962-2410  
Tues, Wed, Fri 10-5 • Thurs 10-9  
Sat 10-4 • Sun 12-4

Admission is FREE!

*Trigon* by Mary P. Neubauer

[www.cityofloveland.org](http://www.cityofloveland.org)